

County : Allegheny
AUN Number : 103028203
LEA Type : SD

LEA Name : Riverview SD
Address : 701 10th St
Oakmont, PA 15139

Annual Financial Report Accuracy Certification Statement

For Fiscal Year Ending
6/30/2018

Pennsylvania Department of Education
&
Office of Comptroller Operations
PDE-2056: Intermediate Unit
PDE-2057: School District, AVTS/CTC, Charter School,
and Special Program Jointure

CERTIFICATION: By signing this page I agree that the electronic data submitted is a complete and accurate statement of the financial operations and status of the local education agency for the fiscal year. It has been prepared in accordance with generally accepted accounting principles and established Commonwealth of PA reporting guidelines.


Chief School Administrator Signature


Board Secretary Signature

11/27/2018
Date

11/26/2018
Date

(412)828-1800 Ext:4020
Contact Person Telephone Number
(412)828-9346
Contact Person Fax Number

Tammy Good
Contact Person
tgood@rsd.k12.pa.us
Contact Person E-mail Address

Audit Certification

Annual Financial Report:

For Fiscal Year Ending 6/30/2018

(Pursuant to PA School Code Section 218(b))

LEA Name : Riverview SD
AUN Number : 103028203
County : Allegheny

Audit Certification Due:
12/31/2018

This certification is applicable to the Annual Financial Report data submitted through the Consolidated Financial Reporting System on: 11/26/2018 Date

Auditing Firm: Hosack, Specht, Muetzel & Wood LLP
2 Penn Center West, Suite 326
Pittsburgh, Pa 15276

Auditor Contact Name: Pete Vancheri
Auditor Phone: 412-343-9200
Auditor E-mail: Hsmw@HSMWCPA.COM

CERTIFICATION: By signing this page I agree that the financial statements of the school have been properly audited as noted above pursuant to Article XXIV, and in the auditor's professional opinion, the Annual Financial Report (PDE-2057) submitted on the date referenced is materially consistent with the audited financial statements.

Chief School Administrator

Margaret Dillinger Date 11/27/18
Signature

Board Secretary
Tammy Good Date 11/27/18
Signature

Tammy Good

Contact Person

tgood@rsd.k12.pa.us

Contact Person E-mail Address

(412)828-1800 Ext :4020

Contact Person Telephone Number

(412)828-9346

Contact Person Fax Number

RIVERVIEW SCHOOL DISTRICT

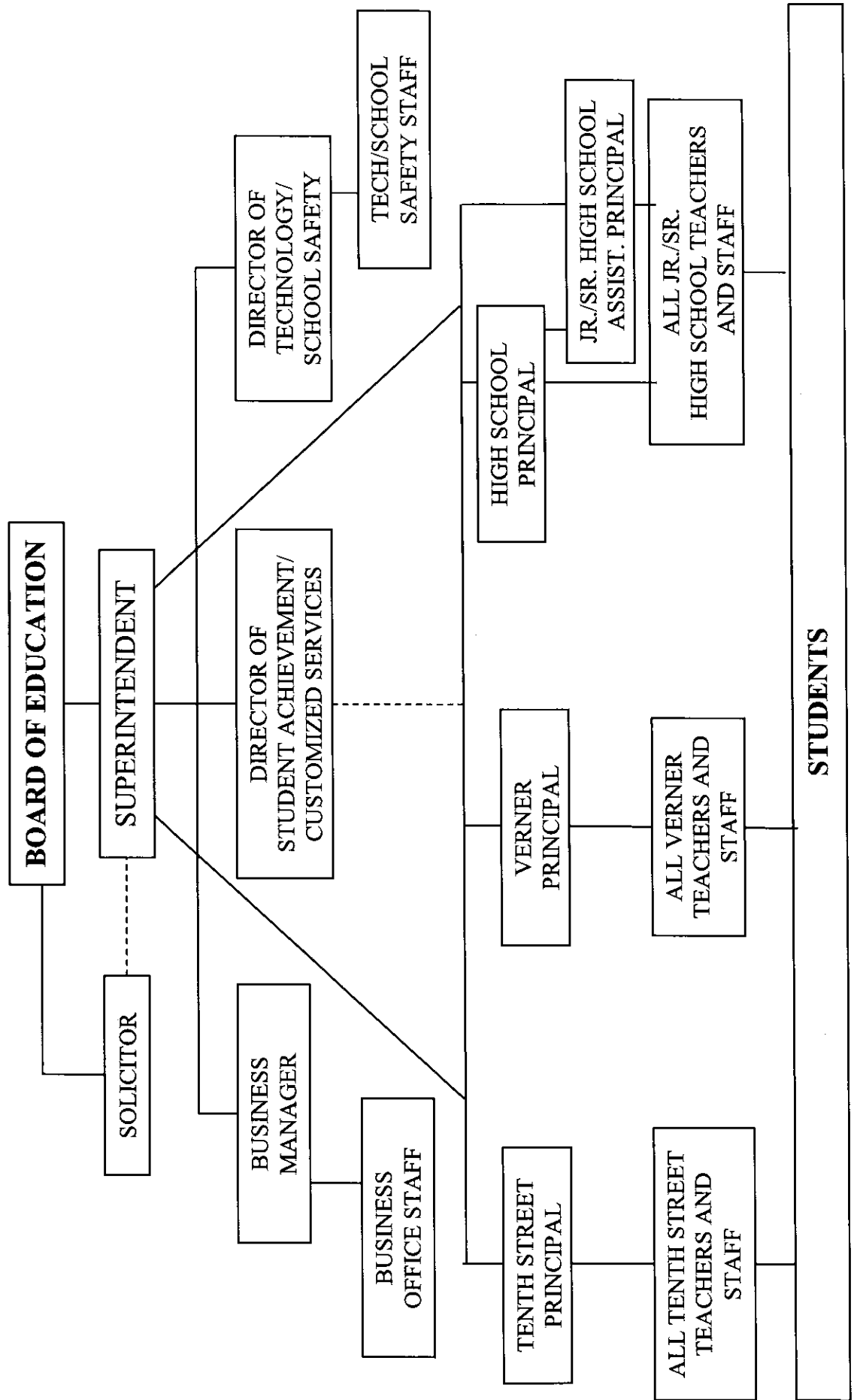
No. 008

SECTION: LOCAL BOARD PROCEDURES

TITLE: ORGANIZATION CHART

ADOPTED: June 18, 2012

REVISED: June 17, 2013



<u>Val Number</u>	<u>Description</u>	<u>Justification</u>
13020	<p>REG: Interfund Trans-Out must equal REG Interfund Trans-In plus REP Interfund Trans In minus REP Interfund Trans-Out. (REG 5200 = REG 9300 + REP 9300 - REP 5200) Reference amts do not include any incoming transfers of the Fid. Funds. Include Fid. Fund incoming transfer info in the justification. Correct or enter a justification.</p> <p>Transfers Out (REG 5200): \$939,111.00 (REG 9300) + (REP 9300) - (REP 5200) : \$934,662.00</p>	Difference is General Fund Contribution to Student Activities Funds for Yearbook and Musical.
41140	<p>Expenditure Detail - There is an entry in function 5150- 990 object "Other". Please explain what constitutes "Other".</p> <p>Expenditure 5150-990, Fund 39: \$69,402.50</p>	Bond Discount
42420	<p>Expenditure Detail: Total current year 2700-513 expenditure varies from prior year by 10%. Correct the data or enter a justification.</p> <p>2700-513, AFR Exp Detail: \$994,848.92 2700-513, PY AFR Amount: \$880,305.70</p>	Added Additional Special Education Transportation runs. Added Additional Homeless Transportation Runs.
50160	<p>SOIN: All Governmental Fund General Obligation Bonds must include an amount for Interest Paid during Fiscal Year. Correct data or enter a justification.</p>	The 2018 GOB closed in late June 2018, no payments or interest have been paid before year-end.

Amounts Expressed in Whole Dollars	<u>General Fund</u> <u>(10)</u>	<u>Public Purpose Trust</u> <u>(27)</u>	<u>Other Compt Approved</u> <u>(28)</u>	<u>Athletic / Activity</u> <u>(29)</u>	<u>Capital Reserve (690.</u> <u>1850)</u> <u>(31)</u>
Assets And Deferred Outflows Of Resources					
Assets					
0100 Cash and Cash Equivalents	1,992,033				
0110 Investments	3,377,078				
0120 Taxes Receivable	2,063,576				
0130 Due From Other Funds	1,227				
0141 Due From Other Governments	816,714				
0142 State Revenue Receivable					
0143 Federal Revenue Receivable					
0145 Other Intergovernmental Revenue Receivable					
0146 Due from Primary Government					
0147 Due from Component Unit					
0150 Other Receivables					
0170 Inventories					
0180 Prepaid Expenses (Expenditures)	199,054				
0190 Other Current Assets	3,846				
Total Assets	\$8,453,528				
0910 Deferred Outflows of Resources					
Total Assets And Deferred Outflows Of Resources	\$8,453,528				

Amounts Expressed in Whole Dollars	<u>Capital Reserve (1431)</u> <u>(32)</u>	<u>Other Capital Projects</u> <u>Fund</u> <u>(39)</u>	<u>Debt Service</u> <u>(40)</u>	<u>Permanent</u> <u>(90)</u>	<u>Total Governmental</u> <u>Funds</u>
Assets And Deferred Outflows Of Resources					
Assets					
0100 Cash and Cash Equivalents	509,844	6,665,864			9,167,741
0110 Investments					3,377,078
0120 Taxes Receivable					2,063,576
0130 Due From Other Funds					1,227
0141 Due From Other Governments					816,714
0142 State Revenue Receivable					
0143 Federal Revenue Receivable					
0145 Other Intergovernmental Revenue Receivable					
0146 Due from Primary Government					
0147 Due from Component Unit					
0150 Other Receivables					
0170 Inventories					
0180 Prepaid Expenses (Expenditures)					199,054
0190 Other Current Assets					3,846
Total Assets	\$509,844	\$6,665,864			\$15,629,236
0910 Deferred Outflows of Resources					
Total Assets And Deferred Outflows Of Resources	\$509,844	\$6,665,864			\$15,629,236

Amounts Expressed in Whole Dollars

	<u>General Fund</u> <u>(10)</u>	<u>Public Purpose Trust</u> <u>(27)</u>	<u>Other Compt Approved</u> <u>(28)</u>	<u>Athletic / Activity</u> <u>(29)</u>	<u>Capital Reserve (690.</u> <u>1850)</u> <u>(31)</u>
Liabilities And Deferred Inflows Of Resources And Fund Balances					
Liabilities					
0400 Due to Other Funds					
0411 Due to Other Governments					
0412 Due to Primary Government					
0413 Due to Component Unit					
0420 Accounts Payable	371,342				
0430 Contracts Payable					
0440 Current Portion of Long-Term Debt					
0450 Short-Term Payables					
0461 Accrued Salaries and Benefits	2,353,593				
0462 Payroll Deductions and Withholding	1,384				
0480 Unearned Revenues					
0490 Other Current Liabilities					
Total Liabilities	\$2,726,319				
0950 Deferred Inflows of Resources	1,658,434				
Fund Balances					
0810 Nonspendable Fund Balance	199,054				
0820 Restricted Fund Balance					
0830 Committed Fund Balance	1,012,964				
0840 Assigned Fund Balance	189,283				
0850 Unassigned Fund Balance	2,667,474				
Total Fund Balances	\$4,068,775				
Total Liabilities, Deferred Inflows Of Resources And Fund Balances	\$8,453,528				

Amounts Expressed in Whole Dollars

	<u>Capital Reserve (1431)</u> <u>(32)</u>	<u>Other Capital Projects</u> <u>Fund</u> <u>(39)</u>	<u>Debt Service</u> <u>(40)</u>	<u>Permanent</u> <u>(90)</u>	<u>Total Governmental</u> <u>Funds</u>
Liabilities And Deferred Inflows Of Resources And Fund Balances					
Liabilities					
0400 Due to Other Funds					
0411 Due to Other Governments					
0412 Due to Primary Government					
0413 Due to Component Unit					
0420 Accounts Payable					371,342
0430 Contracts Payable					
0440 Current Portion of Long-Term Debt					
0450 Short-Term Payables					
0461 Accrued Salaries and Benefits					2,353,593
0462 Payroll Deductions and Withholding					1,384
0480 Unearned Revenues					
0490 Other Current Liabilities					
Total Liabilities					\$2,726,319
0950 Deferred Inflows of Resources					1,658,434
Fund Balances					
0810 Nonspendable Fund Balance					199,054
0820 Restricted Fund Balance	509,844	6,665,864			7,175,708
0830 Committed Fund Balance					1,012,964
0840 Assigned Fund Balance					189,283
0850 Unassigned Fund Balance					2,667,474
Total Fund Balances	\$509,844	\$6,665,864			\$11,244,483
Total Liabilities, Deferred Inflows Of Resources And Fund Balances	\$509,844	\$6,665,864			\$15,629,236

Amounts Expressed in Whole Dollars	<u>General Fund</u> <u>(10)</u>	<u>Public Purpose Trust</u> <u>(27)</u>	<u>Other Compt Approved</u> <u>(28)</u>	<u>Athletic / Activity</u> <u>(29)</u>	<u>Capital Reserve (690.</u> <u>1850)</u> <u>(31)</u>
Revenues					
6000 Revenue from Local Sources	15,964,573				
7000 Revenue from State Sources	6,479,454				
8000 Revenue from Federal Sources	294,334				
Total Revenues	\$22,738,361				
Expenditures					
1000 Instruction	12,213,175				
2000 Support Services	7,656,657				
3000 Operation of Non-Instructional Services	706,261				
4000 Facilities Acquisition, Construction and Improvement Services	17,156				
5110 Debt Service	1,240,637				
5130 Refund of Prior Year Revenues / Receipts	60,958				
Total Expenditures	\$21,894,844				
Excess (Deficiency) Of Revenues Over Expenditures	\$843,517				
Other Financing Sources (Uses)					
9110 Face Value of Bonds Issued					
9120 Proceeds from Refunding of Bonds					
9130 Bond Premiums					
9200 Proceeds from Extended-Term Financing					
9300 Interfund Transfers - IN					
9400 Sale of or Compensation for Loss of Fixed Assets					
9710 Transfers from Component Units					
9720 Transfers from Primary Governments					
9910 Other Financing Sources Not Listed in the 9000 Series					
9990 Insurance Recoveries					
5120 Debt Service – Refunded Bonds					
5150 Bond Discounts					
5200 Interfund Transfers – Out	939,111				
5300 Transfers Out to Component Units/Primary Governments					
Total Other Financing Sources (Uses)	(\$939,111)				

Amounts Expressed in Whole Dollars	<u>Capital Reserve (1431)</u> <u>(32)</u>	<u>Other Capital Projects</u> <u>Fund</u> <u>(39)</u>	<u>Debt Service</u> <u>(40)</u>	<u>Permanent</u> <u>(90)</u>	<u>Total Governmental</u> <u>Funds</u>
Revenues					
6000 Revenue from Local Sources	4,987	6,620			15,976,180
7000 Revenue from State Sources					6,479,454
8000 Revenue from Federal Sources					294,334
Total Revenues	\$4,987	\$6,620			\$22,749,968
Expenditures					
1000 Instruction					12,213,175
2000 Support Services	153	125,413			7,782,223
3000 Operation of Non-Instructional Services					706,261
4000 Facilities Acquisition, Construction and Improvement Services	891,733	345,941			1,254,830
5110 Debt Service					1,240,637
5130 Refund of Prior Year Revenues / Receipts					60,958
Total Expenditures	\$891,886	\$471,354			\$23,258,084
Excess (Deficiency) Of Revenues Over Expenditures	(\$886,899)	(\$464,734)			(\$508,116)
Other Financing Sources (Uses)					
9110 Face Value of Bonds Issued		7,200,000			7,200,000
9120 Proceeds from Refunding of Bonds					
9130 Bond Premiums					
9200 Proceeds from Extended-Term Financing					
9300 Interfund Transfers - IN	874,662				874,662
9400 Sale of or Compensation for Loss of Fixed Assets					
9710 Transfers from Component Units					
9720 Transfers from Primary Governments					
9910 Other Financing Sources Not Listed in the 9000 Series					
9990 Insurance Recoveries					
5120 Debt Service – Refunded Bonds					
5150 Bond Discounts		69,403			69,403
5200 Interfund Transfers – Out					939,111
5300 Transfers Out to Component Units/Primary Governments					
Total Other Financing Sources (Uses)	\$874,662	\$7,130,597			\$7,066,148

Amounts Expressed in Whole Dollars	<u>General Fund</u> <u>(10)</u>	<u>Public Purpose Trust</u> <u>(27)</u>	<u>Other Compt Approved</u> <u>(28)</u>	<u>Athletic / Activity</u> <u>(29)</u>	<u>Capital Reserve</u> <u>(690.</u> <u>1850)</u> <u>(31)</u>
Special And Extraordinary Items					
9920 Special Items – Gains					
9930 Extraordinary Items – Gains					
5520 Special Items – Losses					
5530 Extraordinary Items – Losses					
Net Change In Fund Balances	(\$95,594)				
Fund Balance					
0001 Fund Balance - Beginning of Fiscal Year	4,164,373				
Fund Balance - End Of Year	\$4,068,779				

Amounts Expressed in Whole Dollars	<u>Capital Reserve (1431)</u> <u>(32)</u>	<u>Other Capital Projects</u> <u>Fund</u> <u>(39)</u>	<u>Debt Service</u> <u>(40)</u>	<u>Permanent</u> <u>(90)</u>	<u>Total Governmental</u> <u>Funds</u>
Special And Extraordinary Items					
9920 Special Items – Gains					
9930 Extraordinary Items – Gains					
5520 Special Items – Losses					
5530 Extraordinary Items – Losses					
Net Change In Fund Balances	(\$12,237)	\$6,665,863			\$6,558,032
Fund Balance					
0001 Fund Balance - Beginning of Fiscal Year	522,081				4,686,454
Fund Balance - End Of Year	\$509,844	\$6,665,863			\$11,244,486

Amounts Expressed in Whole Dollars	<u>Food Service</u> <u>(51)</u>	<u>Child Care</u> <u>Operations</u> <u>(52)</u>	<u>Other Enterprise</u> <u>(58)</u>	<u>TOTAL</u>	<u>Internal Service</u> <u>(60)</u>
Assets And Deferred Outflows Of Resources					
Current Assets					
0100 Cash and Cash Equivalents	45,084			45,084	
0110 Investments					
0130 Due From Other Funds					
0141 Due From Other Governments	29,597			29,597	
0142 State Revenue Receivable					
0143 Federal Revenue Receivable					
0146 Due from Primary Government					
0147 Due from Component Unit					
0150 Other Receivables					
0170 Inventories	15,578			15,578	
0180 Prepaid Expenses (Expenditures)					
0190 Other Current Assets					
Total Current Assets	\$90,259			\$90,259	
Noncurrent Assets					
0211 Land					
0212 Site Improvements (Net)					
0220 Buildings and Building Improvements (Net)					
0230 Machinery, Equipment and Furniture (Net)	52,107			52,107	
0250 Construction in Progress					
0260 Long Term Prepayments					
0290 Other Noncurrent Assets					
Total Noncurrent Assets	\$52,107			\$52,107	
0910 Deferred Outflows of Resources					
Total Assets And Deferred Outflows Of Resources	\$142,366			\$142,366	

Amounts Expressed in Whole Dollars	<u>Food Service</u> <u>(51)</u>	<u>Child Care</u> <u>Operations</u> <u>(52)</u>	<u>Other Enterprise</u> <u>(58)</u>	<u>TOTAL</u>	<u>Internal Service</u> <u>(60)</u>
Liabilities And Deferred Inflows Of Resources And Net Position					
Current Liabilities					
0400 Due to Other Funds	1,227			1,227	
0411 Due to Other Governments					
0413 Due to Component Unit					
0420 Accounts Payable	13,049			13,049	
0430 Contracts Payable					
0440 Current Portion of Long-Term Debt					
0450 Short-Term Payables					
0461 Accrued Salaries and Benefits					
0462 Payroll Deductions and Withholding					
0480 Unearned Revenues	3,211			3,211	
0490 Other Current Liabilities					
Total Current Liabilities	\$17,487			\$17,487	
Noncurrent Liabilities					
0510 Bonds Payable					
0520 Extended-Term Financing Agreements Payable					
0530 Lease-Purchase Obligations					
0540 Accumulated Compensated Absences					
0550 Authority Lease Obligations					
0560 Other Post-Employment Benefits (OPEB)					
0570 Net Pension Liability					
0599 Other Noncurrent Liabilities					
Total Noncurrent Liabilities					
Total Liabilities	\$17,487			\$17,487	
0950 Deferred Inflows of Resources					
Net Position					
0791 Net Investment in Capital Assets	52,107			52,107	
0008 Restricted Net Position (0792 – 0798)					
0799 Unrestricted Net Position	72,772			72,772	
Total Net Position	\$124,879			\$124,879	
Total Liabilities And Deferred Inflows Of Resources And Net Position	\$142,366			\$142,366	

Amounts Expressed in Whole Dollars	<u>Food Service</u> <u>(51)</u>	<u>Child Care Operations</u> <u>(52)</u>	<u>Other Enterprise</u> <u>(58)</u>	<u>TOTAL</u>	<u>Internal Service</u> <u>(60)</u>
Operating Revenues					
6600 Food Service Revenue	302,279			302,279	
0071 Charges for Services					
0072 Other Operating Revenue					
Total Operating Revenues	\$302,279			\$302,279	
Operating Expenses					
100 Personnel Services – Salaries					
200 Personnel Services – Employee Benefits					
300 Purchased Professional and Technical Services					
400 Purchased Property Services					
500 Other Purchased Services	568,759			568,759	
600 Supplies	33,773			33,773	
740 Depreciation	8,429			8,429	
810 Dues and Fees	472			472	
890 Miscellaneous Expenditures	2,816			2,816	
Total Operating Expenses	\$614,249			\$614,249	
Operating Income (Loss)	(\$311,970)			(\$311,970)	
Non Operating Revenues (Expenses)					
6500 Earnings on Investments	23			23	
6920 Contributions and Donations from Private Sources					
6930 Gains or Losses on Sale of Fixed Assets					
6991 Refunds of a Prior Year Expenditure					
7000 Revenue from State Sources	14,507			14,507	
8000 Revenue from Federal Sources	249,461			249,461	
820 Claims and Judgments Against the LEA					
830 Interest					
TOTAL Non Operating Revenues (Expenses)	\$263,991			\$263,991	
Income (Loss) Before Contributions And Transfers	(\$47,979)			(\$47,979)	

Amounts Expressed in Whole Dollars	<u>Food Service</u> <u>(51)</u>	<u>Child Care Operations</u> <u>(52)</u>	<u>Other Enterprise</u> <u>(58)</u>	<u>TOTAL</u>	<u>Internal Service</u> <u>(60)</u>
Contributions, Transfers, and Special and Extraordinary Items					
5200 Interfund Transfers – Out					
5300 Transfers Out to Component Units/Primary Governments					
5520 Special Items – Losses					
5530 Extraordinary Items – Losses					
9300 Interfund Transfers - IN	60,000			60,000	
9500 Capital Contributions					
9700 Transfers IN From Component Units/Primary Governments					
9920 Special Items – Gains					
9930 Extraordinary Items – Gains					
Change In Net Position	\$12,021			\$12,021	
0002 Net Position - Beginning of Fiscal Year	112,858			112,858	
0003 Accounting Changes / Residual Equity Transfers					
Net Position - End Of Year	\$124,879			\$124,879	

Amounts Expressed in Whole Dollars	<u>Food Service</u> <u>(51)</u>	<u>Child Care Operations</u> <u>(52)</u>	<u>Other Enterprise</u> <u>(58)</u>	<u>TOTAL</u>	<u>Internal Service(60)</u>
Cash Flows From Operating Activities					
0011 Cash Receipts From Users	298,303			298,303	
0012 Cash Receipts From Assessments Made to Other Funds					
0013 Cash Receipts From Earnings on Investments					
0014 Cash Receipts From Other Operating Revenue					
0015 Cash Payments To Employees For Services					
0016 Cash Payments For Insurance Claims					
0017 Cash Payments To Suppliers For Goods and Services	567,928			567,928	
0018 Cash Payments For Other Operating Expenses	3,288			3,288	
Net Cash Provided By (Used For) Operating Activities	(\$272,913)			(\$272,913)	
Cash Flows From Non-Capital Financing Activities					
0021 Receipts From Local Sources - 6000					
0022 Receipts From State Sources - 7000	14,531			14,531	
0023 Receipts From Federal Sources -8000	216,870			216,870	
0024 Notes and Loans Received (Repaid)					
0025 Interest Paid on Notes/Loans - 5100-830					
0026 Operating Transfers In (Out)/Residual Equity Trans					
0027 Operating Transfers In (Out) Primary Government / Comp Unit	60,000			60,000	
0028 Receipts From Refund of Prior Year Expenditures - 6991					
0029 Special and Extraordinary Gains (losses)					
0030 Receipts from Insurance Recoveries -9990					
Net Cash Prov By (Used for) Non-Capital Financing Activities	\$291,401			\$291,401	
Cash Flows From Capital and Related Financing Activities					
0031 Payments For Fac Acq, Const, and Imp - 4000					
0032 Gain / (Loss) on Sale of Fixed Assets - 6930					
0033 Proceeds From Extended Term Financing - 9200					
0034 Principal Paid on Financing Agreements					
0035 Interest Paid on Financing Agreements - 5100-830					
0036 (Inc) Dec in Contributed Capital					
Net Cash Prov By (Used for) Capital and Related Financing Activities					
Cash Flows From Investing Activities					
0041 Earnings on Investments - 6500	23			23	
0042 Purchase of Inv Securities / Deposits to Inv Pools					
0043 Receipts From Investment Pool Withdrawals					
0044 Proceeds from Sale and Maturity of Inv Securities					

LEA : 103028203 Riverview SD

Printed 12/14/2018 9:18:04 AM

0045 Loans Received (Paid)

Net Cash Prov By (Used for) Investing Activities	\$23	\$23
---	-------------	-------------

	<u>Food Service</u> <u>(51)</u>	<u>Child Care Operations</u> <u>(52)</u>	<u>Other Enterprise</u> <u>(58)</u>	<u>TOTAL</u>	<u>Internal Service</u> <u>(60)</u>
Net Increase (Decrease) in Cash Flows	18,511			18,511	
0004 Cash and Cash Equivalents Beginning of Year	26,573			26,573	
Cash and Cash Equivalents at Year End	\$45,084			\$45,084	
<hr/>					
Reconciliation of Operating Income (Loss) To Net Cash Provided by (Used For) Operating Activities					
0005 Operating Income (Loss) per REP	(311,970)			(311,970)	
Adjustments					
0051 Depreciation and Net Amortization	8,429			8,429	
0052 Provision for Uncollectible Accounts					
0053 Other Adjustments	33,773			33,773	
Effect of Changes in Assets, Liabilities, Deferred Outflows and Deferred Inflows					
0054 (Inc) Dec In Accounts Receivable (0120-0150)					
0055 Advances to Other Funds (0160)					
0056 (Inc) Dec in Inventories (0170)	(595)			(595)	
0057 (Inc) Dec in Prepaid Expenses (0180)					
0058 (Inc) Dec in Other Current or Noncurrent Assets					
0064 Deferred Outflows (0910)					
0059 Inc (Dec) in Accounts Payable (0400-0450)	1,426			1,426	
0060 Inc (Dec) in Accrued Salaries/Benefits (0461)					
0065 Inc (Dec) in Net Pension Liabilities (0570)					
0066 Inc (Dec) in Other Postemp Benefit Oblig (0560)					
0061 Inc (Dec) in Payroll Deductions/Withholding (0462)					
0062 Inc (Dec) in Unearned Revenue (0480)					
0063 Inc (Dec) in Other Current or Noncurrent Liabilities					
0067 Deferred Inflows (0950)	(3,976)			(3,976)	
Total Adjustments	\$39,057			\$39,057	
Cash Provided By (Used for) Total	(\$272,913)			(\$272,913)	

COMBINED STATEMENT OF CASH FLOWS
SCHEDULE OF NONCASH INVESTING, CAPITAL, AND FINANCING ACTIVITIES

Explanation of Transaction and Balance Sheet Effect	Amount
Total	

LEA : 103028203 Riverview SD

Printed 12/14/2018 9:18:05 AM

Amounts Expressed in Whole Dollars

	<u>Private Purpose Trust</u> (71)	<u>Investment Trust</u> (72)	<u>Pension Trust</u> (73)	<u>Activity</u> (81)
Assets And Deferred Outflows Of Resources				
Assets				
0100 Cash and Cash Equivalents	76,098			35,044
0110 Investments				
0130 Due From Other Funds				
0147 Due from Component Unit				
0150 Other Receivables				
0170 Inventories				
0180 Prepaid Expenses (Expenditures)				
0190 Other Current Assets				
0220 Buildings and Building Improvements (Net)				
0230 Machinery, Equipment and Furniture (Net)				
Total Assets	\$76,098			\$35,044
0910 Deferred Outflows of Resources				
Total Assets And Deferred Outflows Of Resources	\$76,098			\$35,044

LEA : 103028203 Riverview SD

Printed 12/14/2018 9:18:05 AM

Amounts Expressed in Whole Dollars	<u>Other Agency</u> <u>(89)</u>	<u>Discrete Component Units</u> <u>(98)</u>	<u>Discrete Component Units</u> <u>(99)</u>	<u>Total Fiduciary Funds</u>
Assets And Deferred Outflows Of Resources				
Assets				
0100 Cash and Cash Equivalents				111,142
0110 Investments				
0130 Due From Other Funds				
0147 Due from Component Unit				
0150 Other Receivables				
0170 Inventories				
0180 Prepaid Expenses (Expenditures)				
0190 Other Current Assets				
0220 Buildings and Building Improvements (Net)				
0230 Machinery, Equipment and Furniture (Net)				
Total Assets				\$111,142
0910 Deferred Outflows of Resources				
Total Assets And Deferred Outflows Of Resources				\$111,142

LEA : 103028203 Riverview SD

Printed 12/14/2018 9:18:05 AM

Amounts Expressed in Whole Dollars	<u>Private Purpose Trust</u> (71)	<u>Investment Trust</u> (72)	<u>Pension Trust</u> (73)	<u>Activity</u> (81)
Liabilities, Deferred Inflows Of Resources And Net Position				
Liabilities				
0400 Due to Other Funds				
0411 Due to Other Governments				
0412 Due to Primary Government				
0413 Due to Component Unit				
0420 Accounts Payable				1,775
0430 Contracts Payable				
0450 Short-Term Payables				
0461 Accrued Salaries and Benefits				
0462 Payroll Deductions and Withholding				
0480 Unearned Revenues				
0490 Other Current Liabilities				33,269
Total Liabilities				\$35,044
0950 Deferred Inflows of Resources				
Net Position				
0791 Net Investment in Capital Assets				
0009 Restricted Net Position (0792 – 0798)	76,098			
0799 Unrestricted Net Position				
Total Net Position	\$76,098			
Total Liabilities, Deferred Inflows Of Resources And Net Position	\$76,098			\$35,044

LEA : 103028203 Riverview SD

Printed 12/14/2018 9:18:05 AM

Amounts Expressed in Whole Dollars	<u>Other Agency</u> (89)	<u>Discrete Component Units</u> (98)	<u>Discrete Component Units</u> (99)	<u>Total Fiduciary Funds</u>
Liabilities, Deferred Inflows Of Resources And Net Position				
Liabilities				
0400 Due to Other Funds				
0411 Due to Other Governments				
0412 Due to Primary Government				
0413 Due to Component Unit				
0420 Accounts Payable				1,775
0430 Contracts Payable				
0450 Short-Term Payables				
0461 Accrued Salaries and Benefits				
0462 Payroll Deductions and Withholding				
0480 Unearned Revenues				
0490 Other Current Liabilities				33,269
Total Liabilities				\$35,044
0950 Deferred Inflows of Resources				
Net Position				
0791 Net Investment in Capital Assets				
0009 Restricted Net Position (0792 – 0798)				76,098
0799 Unrestricted Net Position				
Total Net Position				\$76,098
Total Liabilities, Deferred Inflows Of Resources And Net Position				\$111,142

Amounts Expressed in Whole Dollars	<u>Private Purpose Trust</u> (71)	<u>Investment Trust</u> (72)	<u>Pension Trust</u> (73)	<u>Discrete Component</u> <u>Units</u> (98)	<u>Discrete Component</u> <u>Units</u> (99)	<u>Total Fiduciary</u> <u>Funds</u>
Additions						
0091 Gifts and Contributions						
0092 Other Additions	678					678
Deductions						
0093 Scholarships Awarded	8,000					8,000
0094 Other Deductions						
Change In Net Position	(\$7,322)					(\$7,322)
0006 Net Position – Beginning of Fiscal Year	83,420					83,420
0007 Net Position Held in Trust for Pension Benefits						
Net Position - End of Fiscal Year	\$76,098					\$76,098

	<u>Revenue Reported In Current Year</u>	<u>Current Year Tax Accrual</u>	<u>Prior Year Tax Accrual</u>	<u>Taxes Collected In Current Year</u>
<u>Revenue from Local Sources</u>				
6111 Current Real Estate Taxes	12,931,358.40			12,931,358.40
6113 Public Utility Realty Taxes	15,175.14			15,175.14
6143 Current Act 511 Local Services Taxes	17,505.77			17,505.77
6151 Current Act 511 Earned Income Taxes	1,092,679.86			1,092,679.86
6153 Current Act 511 Real Estate Transfer Taxes	266,751.88			266,751.88
6411 Delinquent Real Estate Taxes	925,817.98			925,817.98
6451 Delinquent Act 511 Earned Income Taxes	376,912.40			376,912.40
6500 Earnings on Investments	74,868.19			
6700 Revenues from LEA Activities	22,601.35			
6821 State Revenue Received from Other Pennsylvania Public LEAs	(18.33)			
6831 Federal Revenue Received from Other Pennsylvania Public LEAs	39,129.54			
6832 Federal IDEA Revenue Received as Pass Through	147,186.67			
6910 Rentals	8,140.00			
6920 Contributions and Donations from Private Sources	23,003.15			
6941 Regular Day School Tuition	150.00			
6991 Refunds of a Prior Year Expenditure	16,970.88			
6999 Other Revenues Not Specified Above	6,339.86			
TOTAL Revenue from Local Sources	\$15,964,572.74			\$15,626,201.43

**Revenue Reported
In Current Year**

Revenue from State Sources

7110 Basic Education Funding	2,998,008.06		
7271 Special Education funds for School-Aged Pupils	673,251.15		
7311 Pupil Transportation Subsidy	155,379.96		
7312 Nonpublic and Charter School Pupil Transportation Subsidy	21,945.00		
7320 Rental and Sinking Fund Payments / Building Reimbursement Subsidy	263,092.99		
7330 Health Services (Medical, Dental, Nurse, Act 25)	20,717.88		
7340 State Property Tax Reduction Allocation	356,590.06		
7505 Ready to Learn Block Grant	126,151.00		
7810 State Share of Social Security and Medicare Taxes	346,410.42		
7820 State Share of Retirement Contributions	1,517,907.16		
TOTAL Revenue from State Sources	\$6,479,453.68		

**Revenue Reported
In Current Year**

Revenue from Federal Sources

8514 NCLB, Title I - Improving the Academic Achievement of the Disadvantaged	200,990.00		
8515 NCLB, Title II - Preparing, Training and Recruiting High Quality Teachers and Principals	36,450.00		
8516 NCLB, Title III - Language Instruction for Limited English Proficient and Immigrant Students	292.40		
8517 NCLB, Title IV - 21st Century Schools	10,000.00		
8810 School-Based Access Medicaid Reimbursement Program (SBAP) Reimbursements (Access)	45,012.69		
8820 Medical Assistance Reimbursement for Administrative Claiming (Quarterly) Program	1,589.19		
TOTAL Revenue from Federal Sources	\$294,334.28		
TOTAL FROM ALL SOURCES	\$22,738,360.70		\$15,626,201.43

Revenue from Local Sources	15,964,572.74
Revenue from State Sources	6,479,453.68
Revenue from Federal Sources	294,334.28
Other Financing Sources	
TOTAL FROM ALL SOURCES	\$22,738,360.70

General Fund (10)

	<u>Total</u>
1000 Instruction	
100 Personnel Services – Salaries	
100 Personnel Services – Salaries	6,246,068.73
Total Personnel Services – Salaries	\$6,246,068.73
200 Personnel Services – Employee Benefits	
210 Group Insurance – Contracted Provider	1,338,522.66
220 Social Security Contributions	463,244.61
230 PSERS Retirement Contributions	2,028,292.28
250 Unemployment Compensation	11,848.16
260 Workers' Compensation	72,666.94
280 Other Post-Employment Benefits (OPEB)	85,074.29
Total Personnel Services – Employee Benefits	\$3,999,648.94
300 Purchased Professional and Technical Services	
322 Professional Educational Services – Ius	226,276.07
330 Other Professional Services	73,315.91
340 Technical Services	73.50
390 Other Purchased Professional and Technical Services	40,600.05
Total Purchased Professional and Technical Services	\$340,265.53
400 Purchased Property Services	
430 Repairs and Maintenance Services	2,563.40
Total Purchased Property Services	\$2,563.40
500 Other Purchased Services	
510 Student Transportation Services	69,687.37
550 Printing and Binding	171.08
562 Tuition To Pennsylvania Charter Schools	375,794.82
564 Tuition To Career and Technology Centers	200,556.61
567 Tuition To Approved Private Schools (APS) and PA Chartered Schools for the Deaf and Blind	163,187.99
568 Tuition To Private Residential Rehabilitative Institutions (PRRI) [In-State] and Detention Centers	344,841.79
569 Tuition – Other	158,499.79
580 Travel	13,297.42
Total Other Purchased Services	\$1,326,036.87
600 Supplies	
610 General Supplies	175,218.86
640 Books and Periodicals	58,933.94
Total Supplies	\$234,152.80
700 Property	
752 Capital Equipment – Original and Additional	30,723.02
762 Capitalized Equipment - Replacement	1,562.65
Total Property	\$32,285.67
800 Other Objects	
810 Dues and Fees	5,195.96
890 Miscellaneous Expenditures	26,956.97

LEA : 103028203 Riverview SD

Printed 12/14/2018 9:18:09 AM

General Fund (10)

1000 Instruction

	<u>Total</u>
Total Other Objects	\$32,152.93
Total 1000 Instruction	\$12,213,174.87

LEA : 103028203 Riverview SD

Printed 12/14/2018 9:18:09 AM

Page - 3 of 18

General Fund (10)**1100 Regular Programs – Elementary / Secondary**

	<u>Elementary</u>	<u>Secondary</u>	<u>Federal</u>	<u>Total</u>
100 Personnel Services – Salaries				
100 Personnel Services – Salaries	2,557,958.59	2,379,241.65	230,388.03	5,167,588.27
Total Personnel Services – Salaries	\$2,557,958.59	\$2,379,241.65	\$230,388.03	\$5,167,588.27
200 Personnel Services – Employee Benefits				
210 Group Insurance – Contracted Provider	616,932.79	471,548.69		1,088,481.48
220 Social Security Contributions	206,795.01	176,223.27		383,018.28
230 PSERS Retirement Contributions	904,262.65	774,397.28		1,678,659.93
250 Unemployment Compensation	10,058.68	1,789.48		11,848.16
260 Workers' Compensation	36,490.55	25,446.67		61,937.22
280 Other Post-Employment Benefits (OPEB)		85,074.29		85,074.29
Total Personnel Services – Employee Benefits	\$1,774,539.68	\$1,534,479.68		\$3,309,019.36
300 Purchased Professional and Technical Services				
330 Other Professional Services	29,948.80	31,475.95	5,512.56	66,937.31
340 Technical Services	73.50			73.50
390 Other Purchased Professional and Technical Services	27,011.63	13,588.42		40,600.05
Total Purchased Professional and Technical Services	\$57,033.93	\$45,064.37	\$5,512.56	\$107,610.86
400 Purchased Property Services				
430 Repairs and Maintenance Services	156.05	2,407.35		2,563.40
Total Purchased Property Services	\$156.05	\$2,407.35		\$2,563.40
500 Other Purchased Services				
510 Student Transportation Services	15,802.42	12,130.96		27,933.38
550 Printing and Binding	171.08			171.08
562 Tuition To Pennsylvania Charter Schools	209,986.44	165,808.38		375,794.82
568 Tuition To Private Residential Rehabilitative Institutions (PRRI) [In-State] and Detention Centers		6,818.24		6,818.24
580 Travel	2,187.95	9,092.00		11,279.95
Total Other Purchased Services	\$228,147.89	\$193,849.58		\$421,997.47
600 Supplies				
610 General Supplies	94,535.67	55,163.92	11,039.41	160,739.00
640 Books and Periodicals	40,467.38	16,824.79		57,292.17
Total Supplies	\$135,003.05	\$71,988.71	\$11,039.41	\$218,031.17
700 Property				
752 Capital Equipment – Original and Additional	5,451.55	19,917.11		25,368.66
Total Property	\$5,451.55	\$19,917.11		\$25,368.66
800 Other Objects				
810 Dues and Fees	3,384.00	705.96		4,089.96
890 Miscellaneous Expenditures	2,750.00	24,206.97		26,956.97
Total Other Objects	\$6,134.00	\$24,912.93		\$31,046.93
Total 1100 Regular Programs – Elementary / Secondary	\$4,764,424.74	\$4,271,861.38	\$246,940.00	\$9,283,226.12

LEA : 103028203 Riverview SD

Printed 12/14/2018 9:18:09 AM

Page - 4 of 18

General Fund (10)**1110 Regular Programs**

	<u>Elementary</u>	<u>Secondary</u>	<u>Federal</u>	<u>Total</u>
100 Personnel Services – Salaries				
100 Personnel Services – Salaries	2,557,958.59	2,379,241.65	230,388.03	5,167,588.27
Total Personnel Services – Salaries	\$2,557,958.59	\$2,379,241.65	\$230,388.03	\$5,167,588.27
200 Personnel Services – Employee Benefits				
210 Group Insurance – Contracted Provider	616,932.79	471,548.69		1,088,481.48
220 Social Security Contributions	206,795.01	176,223.27		383,018.28
230 PSERS Retirement Contributions	904,262.65	774,397.28		1,678,659.93
250 Unemployment Compensation	10,058.68	1,789.48		11,848.16
260 Workers' Compensation	36,490.55	25,446.67		61,937.22
280 Other Post-Employment Benefits (OPEB)		85,074.29		85,074.29
Total Personnel Services – Employee Benefits	\$1,774,539.68	\$1,534,479.68		\$3,309,019.36
300 Purchased Professional and Technical Services				
330 Other Professional Services	29,948.80	31,475.95	5,512.56	66,937.31
340 Technical Services	73.50			73.50
390 Other Purchased Professional and Technical Services	27,011.63	13,588.42		40,600.05
Total Purchased Professional and Technical Services	\$57,033.93	\$45,064.37	\$5,512.56	\$107,610.86
400 Purchased Property Services				
430 Repairs and Maintenance Services	156.05	2,407.35		2,563.40
Total Purchased Property Services	\$156.05	\$2,407.35		\$2,563.40
500 Other Purchased Services				
510 Student Transportation Services	15,802.42	12,130.96		27,933.38
550 Printing and Binding	171.08			171.08
562 Tuition To Pennsylvania Charter Schools	209,986.44	165,808.38		375,794.82
568 Tuition To Private Residential Rehabilitative Institutions (PRRI) [In-State] and Detention Centers		6,818.24		6,818.24
580 Travel	2,187.95	9,092.00		11,279.95
Total Other Purchased Services	\$228,147.89	\$193,849.58		\$421,997.47
600 Supplies				
610 General Supplies	94,535.67	55,163.92	11,039.41	160,739.00
640 Books and Periodicals	40,467.38	16,824.79		57,292.17
Total Supplies	\$135,003.05	\$71,988.71	\$11,039.41	\$218,031.17
700 Property				
752 Capital Equipment – Original and Additional	5,451.55	19,917.11		25,368.66
Total Property	\$5,451.55	\$19,917.11		\$25,368.66
800 Other Objects				
810 Dues and Fees	3,384.00	705.96		4,089.96
890 Miscellaneous Expenditures	2,750.00	24,206.97		26,956.97
Total Other Objects	\$6,134.00	\$24,912.93		\$31,046.93
Total 1110 Regular Programs	\$4,764,424.74	\$4,271,861.38	\$246,940.00	\$9,283,226.12

General Fund (10)

1200 Special Programs – Elementary / Secondary	<u>Elementary</u>	<u>Secondary</u>	<u>Federal</u>	<u>Total</u>
100 Personnel Services – Salaries				
100 Personnel Services – Salaries	404,508.03	319,408.80	177,031.21	900,948.04
Total Personnel Services – Salaries	\$404,508.03	\$319,408.80	\$177,031.21	\$900,948.04
200 Personnel Services – Employee Benefits				
210 Group Insurance – Contracted Provider	89,119.11	116,821.81		205,940.92
220 Social Security Contributions	27,101.43	39,906.64		67,008.07
230 PSERS Retirement Contributions	116,891.43	174,918.57		291,810.00
260 Workers' Compensation	3,866.68	5,023.84		8,890.52
Total Personnel Services – Employee Benefits	\$236,978.65	\$336,670.86		\$573,649.51
300 Purchased Professional and Technical Services				
322 Professional Educational Services – Ius	85,153.18	141,122.89		226,276.07
330 Other Professional Services	3,575.00	2,803.60		6,378.60
Total Purchased Professional and Technical Services	\$88,728.18	\$143,926.49		\$232,654.67
500 Other Purchased Services				
510 Student Transportation Services	210.00	4,691.00		4,901.00
567 Tuition To Approved Private Schools (APS) and PA Chartered Schools for the Deaf and Blind	13,388.80	120,499.19		133,887.99
568 Tuition To Private Residential Rehabilitative Institutions (PRRI) [In-State] and Detention Centers	131,417.20	206,606.35		338,023.55
569 Tuition – Other		140,576.84		140,576.84
580 Travel	465.86	1,551.61		2,017.47
Total Other Purchased Services	\$145,481.86	\$473,924.99		\$619,406.85
600 Supplies				
610 General Supplies	1,346.26	6,490.72		7,836.98
640 Books and Periodicals	875.97			875.97
Total Supplies	\$2,222.23	\$6,490.72		\$8,712.95
700 Property				
752 Capital Equipment – Original and Additional		1,934.73		1,934.73
Total Property		\$1,934.73		\$1,934.73
800 Other Objects				
810 Dues and Fees		1,106.00		1,106.00
Total Other Objects		\$1,106.00		\$1,106.00
Total 1200 Special Programs – Elementary / Secondary	\$877,918.95	\$1,283,462.59	\$177,031.21	\$2,338,412.75

LEA : 103028203 Riverview SD

Printed 12/14/2018 9:18:09 AM

General Fund (10)

1210 Life Skills Support

600 Supplies

610 General Supplies

Total Supplies

700 Property

752 Capital Equipment – Original and Additional

Total Property

Total 1210 Life Skills Support

Elementary

Secondary

Federal

Total

350.97

350.97

\$350.97

\$350.97

127.33

127.33

\$127.33

\$127.33

\$478.30

\$478.30

General Fund (10)

1220 Sensory Support

300 Purchased Professional and Technical Services

322 Professional Educational Services – Ius

Total Purchased Professional and Technical Services

600 Supplies

610 General Supplies

Total Supplies

Total 1220 Sensory Support

	<u>Elementary</u>	<u>Secondary</u>	<u>Federal</u>	<u>Total</u>
	21,172.96	59,302.93		80,475.89
	\$21,172.96	\$59,302.93		\$80,475.89
	21.93	779.99		801.92
	\$21.93	\$779.99		\$801.92
	\$21,194.89	\$60,082.92		\$81,277.81

General Fund (10)

1230 Emotional Support

	<u>Elementary</u>	<u>Secondary</u>	<u>Federal</u>	<u>Total</u>
300 <u>Purchased Professional and Technical Services</u>				
322 Professional Educational Services – Ius	40,705.22	40,698.22		81,403.44
330 Other Professional Services		2,803.60		2,803.60
Total Purchased Professional and Technical Services	\$40,705.22	\$43,501.82		\$84,207.04
500 <u>Other Purchased Services</u>				
568 Tuition To Private Residential Rehabilitative Institutions (PRRI) [In-State] and Detention Centers	131,417.20	191,382.85		322,800.05
569 Tuition – Other		140,576.84		140,576.84
Total Other Purchased Services	\$131,417.20	\$331,959.69		\$463,376.89
600 <u>Supplies</u>				
640 Books and Periodicals	565.77			565.77
Total Supplies	\$565.77			\$565.77
700 <u>Property</u>				
752 Capital Equipment – Original and Additional		1,807.40		1,807.40
Total Property		\$1,807.40		\$1,807.40
Total 1230 Emotional Support	\$172,688.19	\$377,268.91		\$549,957.10

General Fund (10)

1240 Academic Support

	<u>Elementary</u>	<u>Secondary</u>	<u>Federal</u>	<u>Total</u>
100 Personnel Services – Salaries				
100 Personnel Services – Salaries	404,508.03	319,408.80	177,031.21	900,948.04
Total Personnel Services – Salaries	\$404,508.03	\$319,408.80	\$177,031.21	\$900,948.04
200 Personnel Services – Employee Benefits				
210 Group Insurance – Contracted Provider	89,119.11	116,821.81		205,940.92
220 Social Security Contributions	27,101.43	39,906.64		67,008.07
230 PSERS Retirement Contributions	116,891.43	174,918.57		291,810.00
260 Workers' Compensation	3,866.68	5,023.84		8,890.52
Total Personnel Services – Employee Benefits	\$236,978.65	\$336,670.86		\$573,649.51
300 Purchased Professional and Technical Services				
322 Professional Educational Services – Ius	23,275.00	30,329.74		53,604.74
330 Other Professional Services	3,575.00			3,575.00
Total Purchased Professional and Technical Services	\$26,850.00	\$30,329.74		\$57,179.74
500 Other Purchased Services				
510 Student Transportation Services	210.00	4,691.00		4,901.00
580 Travel	465.86	1,551.61		2,017.47
Total Other Purchased Services	\$675.86	\$6,242.61		\$6,918.47
600 Supplies				
610 General Supplies	1,324.33	5,359.76		6,684.09
640 Books and Periodicals	310.20			310.20
Total Supplies	\$1,634.53	\$5,359.76		\$6,994.29
800 Other Objects				
810 Dues and Fees		1,106.00		1,106.00
Total Other Objects		\$1,106.00		\$1,106.00
Total 1240 Academic Support	\$670,647.07	\$699,117.77	\$177,031.21	\$1,546,796.05

General Fund (10)

	<u>Elementary</u>	<u>Secondary</u>	<u>Federal</u>	<u>Total</u>
1241 Learning Support – Public				
100 Personnel Services – Salaries				
100 Personnel Services – Salaries	311,582.73	245,671.31	177,031.21	734,285.25
Total Personnel Services – Salaries	\$311,582.73	\$245,671.31	\$177,031.21	\$734,285.25
200 Personnel Services – Employee Benefits				
210 Group Insurance – Contracted Provider	72,796.22	103,829.59		176,625.81
220 Social Security Contributions	20,128.68	34,387.74		54,516.42
230 PSERS Retirement Contributions	86,625.65	150,902.37		237,528.02
260 Workers' Compensation	2,989.48	4,127.03		7,116.51
Total Personnel Services – Employee Benefits	\$182,540.03	\$293,246.73		\$475,786.76
300 Purchased Professional and Technical Services				
322 Professional Educational Services – lus	23,275.00	30,329.74		53,604.74
Total Purchased Professional and Technical Services	\$23,275.00	\$30,329.74		\$53,604.74
500 Other Purchased Services				
580 Travel	465.86	1,171.83		1,637.69
Total Other Purchased Services	\$465.86	\$1,171.83		\$1,637.69
600 Supplies				
610 General Supplies	76.11	745.60		821.71
Total Supplies	\$76.11	\$745.60		\$821.71
800 Other Objects				
810 Dues and Fees		60.00		60.00
Total Other Objects		\$60.00		\$60.00
Total 1241 Learning Support – Public	\$517,939.73	\$571,225.21	\$177,031.21	\$1,266,196.15

General Fund (10)

1243 Gifted Support

	<u>Elementary</u>	<u>Secondary</u>	<u>Federal</u>	<u>Total</u>
100 Personnel Services – Salaries				
100 Personnel Services – Salaries	92,925.30	73,737.49		166,662.79
Total Personnel Services – Salaries	\$92,925.30	\$73,737.49		\$166,662.79
200 Personnel Services – Employee Benefits				
210 Group Insurance – Contracted Provider	16,322.89	12,992.22		29,315.11
220 Social Security Contributions	6,972.75	5,518.90		12,491.65
230 PSERS Retirement Contributions	30,265.78	24,016.20		54,281.98
260 Workers' Compensation	877.20	896.81		1,774.01
Total Personnel Services – Employee Benefits	\$54,438.62	\$43,424.13		\$97,862.75
300 Purchased Professional and Technical Services				
330 Other Professional Services	3,575.00			3,575.00
Total Purchased Professional and Technical Services	\$3,575.00			\$3,575.00
500 Other Purchased Services				
510 Student Transportation Services	210.00	4,691.00		4,901.00
580 Travel		379.78		379.78
Total Other Purchased Services	\$210.00	\$5,070.78		\$5,280.78
600 Supplies				
610 General Supplies	1,248.22	4,614.16		5,862.38
640 Books and Periodicals	310.20			310.20
Total Supplies	\$1,558.42	\$4,614.16		\$6,172.58
800 Other Objects				
810 Dues and Fees		1,046.00		1,046.00
Total Other Objects		\$1,046.00		\$1,046.00
Total 1243 Gifted Support	\$152,707.34	\$127,892.56		\$280,599.90

General Fund (10)

1270 Multi-Handicapped Support

300 Purchased Professional and Technical Services

322 Professional Educational Services – Ius

Elementary

Secondary

Federal

Total

10,792.00

10,792.00

Total Purchased Professional and Technical Services

\$10,792.00

\$10,792.00

500 Other Purchased Services

568 Tuition To Private Residential Rehabilitative Institutions (PRRI) [In-State] and Detention Centers

3,320.00

3,320.00

Total Other Purchased Services

\$3,320.00

\$3,320.00

Total 1270 Multi-Handicapped Support

\$14,112.00

\$14,112.00

General Fund (10)

1290 Special Programs - Other Support

500 Other Purchased Services

	<u>Elementary</u>	<u>Secondary</u>	<u>Federal</u>	<u>Total</u>
567 Tuition To Approved Private Schools (APS) and PA Chartered Schools for the Deaf and Blind	13,388.80	120,499.19		133,887.99
568 Tuition To Private Residential Rehabilitative Institutions (PRRI) [In-State] and Detention Centers		11,903.50		11,903.50
Total Other Purchased Services	\$13,388.80	\$132,402.69		\$145,791.49
Total 1290 Special Programs - Other Support	\$13,388.80	\$132,402.69		\$145,791.49

General Fund (10)

1300 Vocational Education

	<u>Elementary</u>	<u>Secondary</u>	<u>Federal</u>	<u>Total</u>
100 Personnel Services – Salaries				
100 Personnel Services – Salaries		169,366.97		169,366.97
Total Personnel Services – Salaries		\$169,366.97		\$169,366.97
200 Personnel Services – Employee Benefits				
210 Group Insurance – Contracted Provider		38,313.79		38,313.79
220 Social Security Contributions		12,603.90		12,603.90
230 PSERS Retirement Contributions		55,162.86		55,162.86
260 Workers' Compensation		1,839.20		1,839.20
Total Personnel Services – Employee Benefits		\$107,919.75		\$107,919.75
500 Other Purchased Services				
564 Tuition To Career and Technology Centers		200,556.61		200,556.61
Total Other Purchased Services		\$200,556.61		\$200,556.61
600 Supplies				
610 General Supplies		6,642.88		6,642.88
640 Books and Periodicals		765.80		765.80
Total Supplies		\$7,408.68		\$7,408.68
700 Property				
752 Capital Equipment – Original and Additional		3,419.63		3,419.63
762 Capitalized Equipment - Replacement		1,562.65		1,562.65
Total Property		\$4,982.28		\$4,982.28
Total 1300 Vocational Education		\$490,234.29		\$490,234.29

General Fund (10)

1400 Other Instructional Programs – Elementary / Secondary

Elementary

Secondary

Federal

Total

100 Personnel Services – Salaries

100 Personnel Services – Salaries

8,165.45

8,165.45

Total Personnel Services – Salaries

\$8,165.45

\$8,165.45

200 Personnel Services – Employee Benefits

210 Group Insurance – Contracted Provider

5,786.47

5,786.47

220 Social Security Contributions

614.36

614.36

230 PSERS Retirement Contributions

2,659.49

2,659.49

Total Personnel Services – Employee Benefits

\$9,060.32

\$9,060.32

500 Other Purchased Services

510 Student Transportation Services

36,852.99

36,852.99

567 Tuition To Approved Private Schools (APS) and PA Chartered Schools for the Deaf and Blind

29,300.00

29,300.00

569 Tuition – Other

17,922.95

17,922.95

Total Other Purchased Services

\$84,075.94

\$84,075.94

Total 1400 Other Instructional Programs – Elementary / Secondary

\$101,301.71

\$101,301.71

General Fund (10)

1420 Summer School

	<u>Elementary</u>	<u>Secondary</u>	<u>Federal</u>	<u>Total</u>
100 Personnel Services – Salaries				
100 Personnel Services – Salaries		8,165.45		8,165.45
Total Personnel Services – Salaries		\$8,165.45		\$8,165.45
200 Personnel Services – Employee Benefits				
210 Group Insurance – Contracted Provider		5,786.47		5,786.47
220 Social Security Contributions		614.36		614.36
230 PSERS Retirement Contributions		2,659.49		2,659.49
Total Personnel Services – Employee Benefits		\$9,060.32		\$9,060.32
500 Other Purchased Services				
510 Student Transportation Services		36,852.99		36,852.99
567 Tuition To Approved Private Schools (APS) and PA Chartered Schools for the Deaf and Blind		29,300.00		29,300.00
569 Tuition – Other		12,658.95		12,658.95
Total Other Purchased Services		\$78,811.94		\$78,811.94
Total 1420 Summer School		\$96,037.71		\$96,037.71

General Fund (10)

1440 Alternative Regular Education Programs

Elementary

Secondary

Federal

Total

500 Other Purchased Services

569 Tuition – Other

5,264.00

5,264.00

Total Other Purchased Services

\$5,264.00

\$5,264.00

Total 1440 Alternative Regular Education Programs

\$5,264.00

\$5,264.00

LEA : 103028203 Riverview SD

Printed 12/14/2018 9:18:09 AM

General Fund (10)

1442 Alternative Education Programs

500 Other Purchased Services

569 Tuition - Other

Total Other Purchased Services

Total 1442 Alternative Education Programs

Elementary

Secondary

Federal

Total

5,264.00

5,264.00

\$5,264.00

\$5,264.00

\$5,264.00

\$5,264.00

General Fund (10)

2000 Support Services

Total

100 Personnel Services – Salaries

100 Personnel Services – Salaries 3,027,634.89

Total Personnel Services – Salaries \$3,027,634.89

200 Personnel Services – Employee Benefits

210 Group Insurance – Contracted Provider 727,875.75

220 Social Security Contributions 222,422.84

230 PSERS Retirement Contributions 976,654.71

240 Tuition Reimbursement 38,074.25

260 Workers' Compensation 29,315.76

291 Other Retirement Plans 3,000.00

Total Personnel Services – Employee Benefits \$1,997,343.31

300 Purchased Professional and Technical Services

330 Other Professional Services 394,988.98

390 Other Purchased Professional and Technical Services 8,209.26

Total Purchased Professional and Technical Services \$403,198.24

400 Purchased Property Services

410 Cleaning Services 78,726.00

420 Utility Services 22,730.82

430 Repairs and Maintenance Services 131,675.39

440 Rentals 700.00

460 Extermination Services 1,270.00

Total Purchased Property Services \$235,102.21

500 Other Purchased Services

513 Contracted Carriers 994,848.92

516 Student Transportation Services From the IU 3,452.17

520 Insurance – General 3,789.00

523 General Property and Liability Insurance 63,612.00

530 Communications 36,596.46

541 Advertising Related to Federal Grant Awards 19,337.50

550 Printing and Binding 735.95

580 Travel 16,793.52

595 IU Payments By Withholding 18,823.93

Total Other Purchased Services \$1,157,989.45

600 Supplies

610 General Supplies 126,870.58

620 Energy 296,906.90

640 Books and Periodicals 176,686.58

650 Supplies & Fees – Technology Related 3,762.00

Total Supplies \$604,226.06

700 Property

752 Capital Equipment – Original and Additional 139,106.09

756 Capitalized Technology Hardware and Equipment – Original 25,961.00

766 Capitalized Technology Hardware and Equipment – Replacement 4,790.00

LEA : 103028203 Riverview SD

Printed 12/14/2018 9:18:12 AM

General Fund (10)

2000 Support Services

	<u>Total</u>
Total Property	\$169,857.09
800 Other Objects	
810 Dues and Fees	22,344.21
820 Claims and Judgments Against the LEA	37,335.91
890 Miscellaneous Expenditures	1,625.76
Total Other Objects	\$61,305.88
Total 2000 Support Services	\$7,656,657.13

General Fund (10)

	<u>Elementary</u>	<u>Secondary</u>	<u>Federal</u>	<u>Total</u>
2100 Support Services – Students				
100 Personnel Services – Salaries				
100 Personnel Services – Salaries	115,019.50	253,555.06		368,574.56
Total Personnel Services – Salaries	\$115,019.50	\$253,555.06		\$368,574.56
200 Personnel Services – Employee Benefits				
210 Group Insurance – Contracted Provider	17,583.04	54,987.49		72,570.53
220 Social Security Contributions	8,671.87	18,490.62		27,162.49
230 PSERS Retirement Contributions	36,940.65	82,582.94		119,523.59
260 Workers' Compensation	1,110.05	2,323.64		3,433.69
Total Personnel Services – Employee Benefits	\$64,305.61	\$158,384.69		\$222,690.30
300 Purchased Professional and Technical Services				
330 Other Professional Services		4,063.00		4,063.00
Total Purchased Professional and Technical Services		\$4,063.00		\$4,063.00
500 Other Purchased Services				
580 Travel	550.00	252.62		802.62
Total Other Purchased Services	\$550.00	\$252.62		\$802.62
600 Supplies				
610 General Supplies	1,766.57	431.00		2,197.57
640 Books and Periodicals	205.80	8,400.00		8,605.80
Total Supplies	\$1,972.37	\$8,831.00		\$10,803.37
800 Other Objects				
890 Miscellaneous Expenditures		1,625.76		1,625.76
Total Other Objects		\$1,625.76		\$1,625.76
Total 2100 Support Services – Students	\$181,847.48	\$426,712.13		\$608,559.61

General Fund (10)

2120 Guidance Services

	<u>Elementary</u>	<u>Secondary</u>	<u>Federal</u>	<u>Total</u>
100 Personnel Services – Salaries				
100 Personnel Services – Salaries	115,019.50	253,555.06		368,574.56
Total Personnel Services – Salaries	\$115,019.50	\$253,555.06		\$368,574.56
200 Personnel Services – Employee Benefits				
210 Group Insurance – Contracted Provider	17,583.04	54,987.49		72,570.53
220 Social Security Contributions	8,671.87	18,490.62		27,162.49
230 PSERS Retirement Contributions	36,940.65	82,582.94		119,523.59
260 Workers' Compensation	1,110.05	2,323.64		3,433.69
Total Personnel Services – Employee Benefits	\$64,305.61	\$158,384.69		\$222,690.30
300 Purchased Professional and Technical Services				
330 Other Professional Services		3,688.00		3,688.00
Total Purchased Professional and Technical Services		\$3,688.00		\$3,688.00
500 Other Purchased Services				
580 Travel	550.00	252.62		802.62
Total Other Purchased Services	\$550.00	\$252.62		\$802.62
600 Supplies				
610 General Supplies	1,766.57	431.00		2,197.57
640 Books and Periodicals	205.80	8,400.00		8,605.80
Total Supplies	\$1,972.37	\$8,831.00		\$10,803.37
800 Other Objects				
890 Miscellaneous Expenditures		1,625.76		1,625.76
Total Other Objects		\$1,625.76		\$1,625.76
Total 2120 Guidance Services	\$181,847.48	\$426,337.13		\$608,184.61

General Fund (10)

2140 Psychological Services

300 Purchased Professional and Technical Services

330 Other Professional Services

Total Purchased Professional and Technical Services

Total 2140 Psychological Services

Elementary

Secondary

Federal

Total

375.00

375.00

\$375.00

\$375.00

\$375.00

\$375.00

General Fund (10)

	<u>Elementary</u>	<u>Secondary</u>	<u>Federal</u>	<u>Total</u>
2200 Support Services – Instructional Staff				
100 Personnel Services – Salaries				
100 Personnel Services – Salaries	525,964.41	378,294.92		904,259.33
Total Personnel Services – Salaries	\$525,964.41	\$378,294.92		\$904,259.33
200 Personnel Services – Employee Benefits				
210 Group Insurance – Contracted Provider	177,857.69	72,060.68		249,918.37
220 Social Security Contributions	38,048.19	27,973.77		66,021.96
230 PSERS Retirement Contributions	170,010.18	120,980.74		290,990.92
240 Tuition Reimbursement	5,841.75	32,232.50		38,074.25
260 Workers' Compensation	3,915.90	5,225.68		9,141.58
Total Personnel Services – Employee Benefits	\$395,673.71	\$258,473.37		\$654,147.08
300 Purchased Professional and Technical Services				
330 Other Professional Services	13,808.70	5,103.29		18,911.99
Total Purchased Professional and Technical Services	\$13,808.70	\$5,103.29		\$18,911.99
500 Other Purchased Services				
550 Printing and Binding		731.87		731.87
580 Travel	3,400.00	831.29	2,981.92	7,213.21
Total Other Purchased Services	\$3,400.00	\$1,563.16	\$2,981.92	\$7,945.08
600 Supplies				
610 General Supplies	10,517.13	8,323.22	4,111.90	22,952.25
640 Books and Periodicals	72,843.32	58,113.48	1,423.90	132,380.70
Total Supplies	\$83,360.45	\$66,436.70	\$5,535.80	\$155,332.95
700 Property				
752 Capital Equipment – Original and Additional	36,781.94	81,077.99		117,859.93
766 Capitalized Technology Hardware and Equipment– Replacement	3,090.00	1,700.00		4,790.00
Total Property	\$39,871.94	\$82,777.99		\$122,649.93
800 Other Objects				
810 Dues and Fees		1,200.00		1,200.00
Total Other Objects		\$1,200.00		\$1,200.00
Total 2200 Support Services – Instructional Staff	\$1,062,079.21	\$793,849.43	\$8,517.72	\$1,864,446.36

General Fund (10)

	<u>Elementary</u>	<u>Secondary</u>	<u>Federal</u>	<u>Total</u>
2220 Technology Support Services				
100 Personnel Services – Salaries				
100 Personnel Services – Salaries	88,877.52	90,477.17		179,354.69
Total Personnel Services – Salaries	\$88,877.52	\$90,477.17		\$179,354.69
200 Personnel Services – Employee Benefits				
210 Group Insurance – Contracted Provider	17,428.68	18,202.87		35,631.55
220 Social Security Contributions	6,582.48	6,701.94		13,284.42
230 PSERS Retirement Contributions	28,621.96	28,621.48		57,243.44
260 Workers' Compensation		1,746.80		1,746.80
Total Personnel Services – Employee Benefits	\$52,633.12	\$55,273.09		\$107,906.21
300 Purchased Professional and Technical Services				
330 Other Professional Services	1,697.50	937.50		2,635.00
Total Purchased Professional and Technical Services	\$1,697.50	\$937.50		\$2,635.00
500 Other Purchased Services				
580 Travel		666.29		666.29
Total Other Purchased Services		\$666.29		\$666.29
600 Supplies				
610 General Supplies	5,281.72	5,965.40		11,247.12
640 Books and Periodicals	53,406.23	39,904.60		93,310.83
Total Supplies	\$58,687.95	\$45,870.00		\$104,557.95
700 Property				
752 Capital Equipment – Original and Additional	36,781.94	81,077.99		117,859.93
766 Capitalized Technology Hardware and Equipment – Replacement	3,090.00	1,700.00		4,790.00
Total Property	\$39,871.94	\$82,777.99		\$122,649.93
Total 2220 Technology Support Services	\$241,768.03	\$276,002.04		\$517,770.07

General Fund (10)

2250 School Library Services

100 Personnel Services – Salaries

	<u>Elementary</u>	<u>Secondary</u>	<u>Federal</u>	<u>Total</u>
100 Personnel Services – Salaries	94,080.00	89,510.00		183,590.00
Total Personnel Services – Salaries	\$94,080.00	\$89,510.00		\$183,590.00

200 Personnel Services – Employee Benefits

210 Group Insurance – Contracted Provider	18,546.67	18,109.31		36,655.98
220 Social Security Contributions	7,018.50	6,665.80		13,684.30
230 PSERS Retirement Contributions	30,641.85	29,153.47		59,795.32
260 Workers' Compensation	882.11	877.21		1,759.32
Total Personnel Services – Employee Benefits	\$57,089.13	\$54,805.79		\$111,894.92

500 Other Purchased Services

550 Printing and Binding		731.87		731.87
580 Travel		165.00		165.00
Total Other Purchased Services		\$896.87		\$896.87

600 Supplies

610 General Supplies	930.35	691.05		1,621.40
640 Books and Periodicals	8,235.52	14,922.20		23,157.72
Total Supplies	\$9,165.87	\$15,613.25		\$24,779.12

Total 2250 School Library Services

Total 2250 School Library Services	\$160,335.00	\$160,825.91		\$321,160.91
---	---------------------	---------------------	--	---------------------

General Fund (10)

	<u>Elementary</u>	<u>Secondary</u>	<u>Federal</u>	<u>Total</u>
2260 Instruction and Curriculum Development Services				
100 Personnel Services – Salaries				
100 Personnel Services – Salaries	68,832.75	43,847.64		112,680.39
Total Personnel Services – Salaries	\$68,832.75	\$43,847.64		\$112,680.39
200 Personnel Services – Employee Benefits				
210 Group Insurance – Contracted Provider	41,823.69	25,360.37		67,184.06
220 Social Security Contributions	5,288.16	3,183.38		8,471.54
230 PSERS Retirement Contributions	22,905.56	13,794.59		36,700.15
260 Workers' Compensation	326.66	653.34		980.00
Total Personnel Services – Employee Benefits	\$70,344.07	\$42,991.68		\$113,335.75
300 Purchased Professional and Technical Services				
330 Other Professional Services	5,633.33	2,142.24		7,775.57
Total Purchased Professional and Technical Services	\$5,633.33	\$2,142.24		\$7,775.57
500 Other Purchased Services				
580 Travel	3,400.00		2,981.92	6,381.92
Total Other Purchased Services	\$3,400.00		\$2,981.92	\$6,381.92
600 Supplies				
610 General Supplies	4,305.06	1,666.77	4,111.90	10,083.73
640 Books and Periodicals	11,201.57	3,286.68	1,423.90	15,912.15
Total Supplies	\$15,506.63	\$4,953.45	\$5,535.80	\$25,995.88
800 Other Objects				
810 Dues and Fees		1,200.00		1,200.00
Total Other Objects		\$1,200.00		\$1,200.00
Total 2260 Instruction and Curriculum Development Services	\$163,716.78	\$95,135.01	\$8,517.72	\$267,369.51

General Fund (10)

2270 Instructional Staff Professional Development Services

200 Personnel Services – Employee Benefits

240 Tuition Reimbursement

Total Personnel Services – Employee Benefits

Total 2270 Instructional Staff Professional Development Services

	<u>Elementary</u>	<u>Secondary</u>	<u>Federal</u>	<u>Total</u>
240 Tuition Reimbursement	5,841.75	32,232.50		38,074.25
Total Personnel Services – Employee Benefits	\$5,841.75	\$32,232.50		\$38,074.25
Total 2270 Instructional Staff Professional Development Services	\$5,841.75	\$32,232.50		\$38,074.25

General Fund (10)

2290 Other Instructional Staff Services	<u>Elementary</u>	<u>Secondary</u>	<u>Federal</u>	<u>Total</u>
100 Personnel Services – Salaries				
100 Personnel Services – Salaries	274,174.14	154,460.11		428,634.25
Total Personnel Services – Salaries	\$274,174.14	\$154,460.11		\$428,634.25
200 Personnel Services – Employee Benefits				
210 Group Insurance – Contracted Provider	100,058.65	10,388.13		110,446.78
220 Social Security Contributions	19,159.05	11,422.65		30,581.70
230 PSERS Retirement Contributions	87,840.81	49,411.20		137,252.01
260 Workers' Compensation	2,707.13	1,948.33		4,655.46
Total Personnel Services – Employee Benefits	\$209,765.64	\$73,170.31		\$282,935.95
300 Purchased Professional and Technical Services				
330 Other Professional Services	6,477.87	2,023.55		8,501.42
Total Purchased Professional and Technical Services	\$6,477.87	\$2,023.55		\$8,501.42
Total 2290 Other Instructional Staff Services	\$490,417.65	\$229,653.97		\$720,071.62

LEA : 103028203 Riverview SD

Printed 12/14/2018 9:18:12 AM

Page - 12 of 38

General Fund (10)

	<u>Elementary</u>	<u>Secondary</u>	<u>Federal</u>	<u>Total</u>
2300 Support Services – Administration				
100 Personnel Services – Salaries				
100 Personnel Services – Salaries	327,064.22	279,456.41		871,663.43
Total Personnel Services – Salaries	\$327,064.22	\$279,456.41		\$871,663.43
200 Personnel Services – Employee Benefits				
210 Group Insurance – Contracted Provider	73,610.94	73,091.60		201,305.85
220 Social Security Contributions	24,361.91	20,767.57		63,788.05
230 PSERS Retirement Contributions	105,873.58	90,367.47		282,598.38
260 Workers' Compensation	3,180.39	2,773.60		8,571.20
291 Other Retirement Plans				3,000.00
Total Personnel Services – Employee Benefits	\$207,026.82	\$187,000.24		\$559,263.48
300 Purchased Professional and Technical Services				
330 Other Professional Services				289,006.55
390 Other Purchased Professional and Technical Services				8,209.26
Total Purchased Professional and Technical Services				\$297,215.81
500 Other Purchased Services				
520 Insurance – General				3,789.00
541 Advertising Related to Federal Grant Awards				19,337.50
550 Printing and Binding				4.08
580 Travel	662.89	1,802.72		2,665.76
Total Other Purchased Services	\$662.89	\$1,802.72		\$25,796.34
600 Supplies				
610 General Supplies	5,285.26	5,085.20		21,048.57
640 Books and Periodicals	308.99	243.96		988.65
650 Supplies & Fees – Technology Related	2,508.00	1,254.00		3,762.00
Total Supplies	\$8,102.25	\$6,583.16		\$25,799.22
700 Property				
752 Capital Equipment – Original and Additional				1,231.88
Total Property				\$1,231.88
800 Other Objects				
810 Dues and Fees	1,190.00	489.00		17,158.89
820 Claims and Judgments Against the LEA				37,335.91
Total Other Objects	\$1,190.00	\$489.00		\$54,494.80
Total 2300 Support Services – Administration	\$544,046.18	\$475,331.53		\$1,835,464.96

General Fund (10)

2310 Board Services

Elementary

Secondary

Federal

Total

300 Purchased Professional and Technical Services

330 Other Professional Services

12,322.50

Total Purchased Professional and Technical Services

\$12,322.50

500 Other Purchased Services

541 Advertising Related to Federal Grant Awards

3,797.50

Total Other Purchased Services

\$3,797.50

600 Supplies

610 General Supplies

1,675.03

Total Supplies

\$1,675.03

700 Property

752 Capital Equipment – Original and Additional

1,231.88

Total Property

\$1,231.88

800 Other Objects

810 Dues and Fees

12,325.89

820 Claims and Judgments Against the LEA

37,335.91

Total Other Objects

\$49,661.80

Total 2310 Board Services

\$68,688.71

General Fund (10)

	<u>Elementary</u>	<u>Secondary</u>	<u>Federal</u>	<u>Total</u>
2330 Tax Assessment and Collection Services				
300 <u>Purchased Professional and Technical Services</u>				
330 Other Professional Services				158,751.36
390 Other Purchased Professional and Technical Services				5,481.74
Total Purchased Professional and Technical Services				\$164,233.10
500 <u>Other Purchased Services</u>				
520 Insurance – General				3,789.00
550 Printing and Binding				4.08
Total Other Purchased Services				\$3,793.08
Total 2330 Tax Assessment and Collection Services				\$168,026.18

General Fund (10)

2350 Legal and Accounting Services

Elementary

Secondary

Federal

Total

300 Purchased Professional and Technical Services

330 Other Professional Services

119,970.10

Total Purchased Professional and Technical Services

\$119,970.10

Total 2350 Legal and Accounting Services

\$119,970.10

General Fund (10)

2360 Office of the Superintendent / Executive Director Services

Elementary Secondary Federal Total

100	<u>Personnel Services – Salaries</u>			
	100 Personnel Services – Salaries			265,142.80
Total Personnel Services – Salaries				\$265,142.80
200	<u>Personnel Services – Employee Benefits</u>			
	210 Group Insurance – Contracted Provider			54,603.31
	220 Social Security Contributions			18,658.57
	230 PSERS Retirement Contributions			86,357.33
	260 Workers' Compensation			2,617.21
	291 Other Retirement Plans			3,000.00
Total Personnel Services – Employee Benefits				\$165,236.42
300	<u>Purchased Professional and Technical Services</u>			
	330 Other Professional Services			(2,037.41)
	390 Other Purchased Professional and Technical Services			2,727.52
Total Purchased Professional and Technical Services				\$690.11
500	<u>Other Purchased Services</u>			
	541 Advertising Related to Federal Grant Awards			15,540.00
	580 Travel			200.15
Total Other Purchased Services				\$15,740.15
600	<u>Supplies</u>			
	610 General Supplies			7,364.08
	640 Books and Periodicals			435.70
Total Supplies				\$7,799.78
800	<u>Other Objects</u>			
	810 Dues and Fees			3,154.00
Total Other Objects				\$3,154.00
Total 2360 Office of the Superintendent / Executive Director Services				\$457,763.26

General Fund (10)

2380 Office of the Principal Services

100 Personnel Services – Salaries

	<u>Elementary</u>	<u>Secondary</u>	<u>Federal</u>	<u>Total</u>
100 Personnel Services – Salaries	327,064.22	279,456.41		606,520.63
Total Personnel Services – Salaries	\$327,064.22	\$279,456.41		\$606,520.63

200 Personnel Services – Employee Benefits

210 Group Insurance – Contracted Provider	73,610.94	73,091.60		146,702.54
220 Social Security Contributions	24,361.91	20,767.57		45,129.48
230 PSERS Retirement Contributions	105,873.58	90,367.47		196,241.05
260 Workers' Compensation	3,180.39	2,773.60		5,953.99
Total Personnel Services – Employee Benefits	\$207,026.82	\$187,000.24		\$394,027.06

500 Other Purchased Services

580 Travel	662.89	1,802.72		2,465.61
Total Other Purchased Services	\$662.89	\$1,802.72		\$2,465.61

600 Supplies

610 General Supplies	5,285.26	5,085.20		10,370.46
640 Books and Periodicals	308.99	243.96		552.95
650 Supplies & Fees – Technology Related	2,508.00	1,254.00		3,762.00
Total Supplies	\$8,102.25	\$6,583.16		\$14,685.41

800 Other Objects

810 Dues and Fees	1,190.00	489.00		1,679.00
Total Other Objects	\$1,190.00	\$489.00		\$1,679.00

Total 2380 Office of the Principal Services

	\$544,046.18	\$475,331.53		\$1,019,377.71
--	---------------------	---------------------	--	-----------------------

General Fund (10)

2390 Other Administration Services

Elementary

Secondary

Federal

Total

600 Supplies

610 General Supplies

1,639.00

Total Supplies

\$1,639.00

Total 2390 Other Administration Services

\$1,639.00

General Fund (10)

	<u>Elementary</u>	<u>Secondary</u>	<u>Federal</u>	<u>Total</u>
2400 Support Services – Pupil Health				
100 Personnel Services – Salaries				
100 Personnel Services – Salaries				154,969.85
Total Personnel Services – Salaries				\$154,969.85
200 Personnel Services – Employee Benefits				
210 Group Insurance – Contracted Provider				28,365.45
220 Social Security Contributions				11,577.77
230 PSERS Retirement Contributions				50,473.72
260 Workers' Compensation				1,474.26
Total Personnel Services – Employee Benefits				\$91,891.20
300 Purchased Professional and Technical Services				
330 Other Professional Services				16,677.90
Total Purchased Professional and Technical Services				\$16,677.90
500 Other Purchased Services				
580 Travel				708.79
Total Other Purchased Services				\$708.79
600 Supplies				
610 General Supplies				5,106.98
640 Books and Periodicals				244.40
Total Supplies				\$5,351.38
700 Property				
752 Capital Equipment – Original and Additional				1,599.00
Total Property				\$1,599.00
800 Other Objects				
810 Dues and Fees				130.00
Total Other Objects				\$130.00
Total 2400 Support Services – Pupil Health				\$271,328.12

General Fund (10)

2420 Medical Services

Elementary

Secondary

Federal

Total

300 Purchased Professional and Technical Services

330 Other Professional Services

13,900.00

Total Purchased Professional and Technical Services

\$13,900.00

Total 2420 Medical Services

\$13,900.00

General Fund (10)

2430 Dental Services

Elementary

Secondary

Federal

Total

300 Purchased Professional and Technical Services

330 Other Professional Services

1,674.00

Total Purchased Professional and Technical Services

\$1,674.00

Total 2430 Dental Services

\$1,674.00

General Fund (10)

2440 Nursing Services

Elementary Secondary Federal Total

100 Personnel Services – Salaries

100 Personnel Services – Salaries 154,969.85

Total Personnel Services – Salaries \$154,969.85

200 Personnel Services – Employee Benefits

210 Group Insurance – Contracted Provider 28,365.45

220 Social Security Contributions 11,577.77

230 PSERS Retirement Contributions 50,473.72

260 Workers' Compensation 1,474.26

Total Personnel Services – Employee Benefits \$91,891.20

300 Purchased Professional and Technical Services

330 Other Professional Services 1,103.90

Total Purchased Professional and Technical Services \$1,103.90

500 Other Purchased Services

580 Travel 708.79

Total Other Purchased Services \$708.79

600 Supplies

610 General Supplies 5,106.98

640 Books and Periodicals 244.40

Total Supplies \$5,351.38

700 Property

752 Capital Equipment – Original and Additional 1,599.00

Total Property \$1,599.00

800 Other Objects

810 Dues and Fees 130.00

Total Other Objects \$130.00

Total 2440 Nursing Services \$255,754.12

General Fund (10)

	<u>Elementary</u>	<u>Secondary</u>	<u>Federal</u>	<u>Total</u>
2500 Support Services – Business				
100 Personnel Services – Salaries				
100 Personnel Services – Salaries				214,170.13
Total Personnel Services – Salaries				\$214,170.13
200 Personnel Services – Employee Benefits				
210 Group Insurance – Contracted Provider				49,678.35
220 Social Security Contributions				15,975.60
230 PSERS Retirement Contributions				69,103.57
260 Workers' Compensation				2,121.29
Total Personnel Services – Employee Benefits				\$136,878.81
300 Purchased Professional and Technical Services				
330 Other Professional Services				730.00
Total Purchased Professional and Technical Services				\$730.00
500 Other Purchased Services				
530 Communications				4,169.13
580 Travel				2,963.77
Total Other Purchased Services				\$7,132.90
600 Supplies				
610 General Supplies				10,156.81
640 Books and Periodicals				34,467.03
Total Supplies				\$44,623.84
800 Other Objects				
810 Dues and Fees				3,855.32
Total Other Objects				\$3,855.32
Total 2500 Support Services – Business				\$407,391.00

General Fund (10)

2510 Fiscal Services

Elementary

Secondary

Federal

Total

100 Personnel Services – Salaries

100 Personnel Services – Salaries

214,170.13

Total Personnel Services – Salaries

\$214,170.13

200 Personnel Services – Employee Benefits

210 Group Insurance – Contracted Provider

49,678.35

220 Social Security Contributions

15,975.60

230 PSERS Retirement Contributions

69,103.57

260 Workers' Compensation

2,121.29

Total Personnel Services – Employee Benefits

\$136,878.81

300 Purchased Professional and Technical Services

330 Other Professional Services

730.00

Total Purchased Professional and Technical Services

\$730.00

500 Other Purchased Services

530 Communications

44.13

580 Travel

2,963.77

Total Other Purchased Services

\$3,007.90

600 Supplies

610 General Supplies

10,156.81

640 Books and Periodicals

34,467.03

Total Supplies

\$44,623.84

800 Other Objects

810 Dues and Fees

3,855.32

Total Other Objects

\$3,855.32

Total 2510 Fiscal Services

\$403,266.00

General Fund (10)

2511 Supervision of Fiscal Services - Head of Component

Elementary

Secondary

Federal

Total

100 Personnel Services – Salaries

100 Personnel Services – Salaries

214,170.13

Total Personnel Services – Salaries

\$214,170.13

200 Personnel Services – Employee Benefits

210 Group Insurance – Contracted Provider

49,678.35

220 Social Security Contributions

15,975.60

230 PSERS Retirement Contributions

69,103.57

260 Workers' Compensation

2,121.29

Total Personnel Services – Employee Benefits

\$136,878.81

500 Other Purchased Services

530 Communications

44.13

580 Travel

2,963.77

Total Other Purchased Services

\$3,007.90

600 Supplies

610 General Supplies

10,156.81

640 Books and Periodicals

34,467.03

Total Supplies

\$44,623.84

800 Other Objects

810 Dues and Fees

3,855.32

Total Other Objects

\$3,855.32

Total 2511 Supervision of Fiscal Services - Head of Component

\$402,536.00

General Fund (10)

2517 Property Accounting Services

Elementary

Secondary

Federal

Total

300 Purchased Professional and Technical Services

330 Other Professional Services

730.00

Total Purchased Professional and Technical Services

\$730.00

Total 2517 Property Accounting Services

\$730.00

General Fund (10)

2590 Other Support Services – Business

Elementary

Secondary

Federal

Total

500 Other Purchased Services

530 Communications

4,125.00

Total Other Purchased Services

\$4,125.00

Total 2590 Other Support Services – Business

\$4,125.00

General Fund (10)

	<u>Elementary</u>	<u>Secondary</u>	<u>Federal</u>	<u>Total</u>
2600 Operation and Maintenance of Plant Services				
100 Personnel Services – Salaries				
100 Personnel Services – Salaries				513,099.95
Total Personnel Services – Salaries				\$513,099.95
200 Personnel Services – Employee Benefits				
210 Group Insurance – Contracted Provider				126,037.20
220 Social Security Contributions				37,828.29
230 PSERS Retirement Contributions				163,957.53
260 Workers' Compensation				4,573.74
Total Personnel Services – Employee Benefits				\$332,396.76
300 Purchased Professional and Technical Services				
330 Other Professional Services				65,599.54
Total Purchased Professional and Technical Services				\$65,599.54
400 Purchased Property Services				
410 Cleaning Services				78,726.00
420 Utility Services				22,730.82
430 Repairs and Maintenance Services				131,675.39
440 Rentals				700.00
460 Extermination Services				1,270.00
Total Purchased Property Services				\$235,102.21
500 Other Purchased Services				
523 General Property and Liability Insurance				63,612.00
530 Communications				32,427.33
580 Travel				2,439.37
Total Other Purchased Services				\$98,478.70
600 Supplies				
610 General Supplies	37,225.79	28,182.61		65,408.40
620 Energy				296,906.90
Total Supplies	\$37,225.79	\$28,182.61		\$362,315.30
700 Property				
752 Capital Equipment – Original and Additional				18,415.28
756 Capitalized Technology Hardware and Equipment – Original				25,961.00
Total Property				\$44,376.28
Total 2600 Operation and Maintenance of Plant Services	\$37,225.79	\$28,182.61		\$1,651,368.74

General Fund (10)

2610 Supervision of Operation and Maintenance of Plant Services

	<u>Elementary</u>	<u>Secondary</u>	<u>Federal</u>	<u>Total</u>
100 Personnel Services – Salaries				
100 Personnel Services – Salaries				513,099.95
Total Personnel Services – Salaries				\$513,099.95
200 Personnel Services – Employee Benefits				
210 Group Insurance – Contracted Provider				126,037.20
220 Social Security Contributions				37,828.29
230 PSERS Retirement Contributions				163,957.53
260 Workers' Compensation				4,573.74
Total Personnel Services – Employee Benefits				\$332,396.76
300 Purchased Professional and Technical Services				
330 Other Professional Services				64,165.21
Total Purchased Professional and Technical Services				\$64,165.21
400 Purchased Property Services				
410 Cleaning Services				78,726.00
420 Utility Services				22,730.82
430 Repairs and Maintenance Services				131,675.39
440 Rentals				700.00
460 Extermination Services				1,270.00
Total Purchased Property Services				\$235,102.21
500 Other Purchased Services				
523 General Property and Liability Insurance				63,612.00
530 Communications				32,427.33
580 Travel				2,439.37
Total Other Purchased Services				\$98,478.70
600 Supplies				
610 General Supplies	37,225.79	27,442.26		64,668.05
620 Energy				296,906.90
Total Supplies	\$37,225.79	\$27,442.26		\$361,574.95
700 Property				
752 Capital Equipment – Original and Additional				18,415.28
Total Property				\$18,415.28
Total 2610 Supervision of Operation and Maintenance of Plant Services	\$37,225.79	\$27,442.26		\$1,623,233.06

General Fund (10)

	<u>Elementary</u>	<u>Secondary</u>	<u>Federal</u>	<u>Total</u>
2611 Supervision of Operation and Maintenance of Plant Services – Head of Component				
100 Personnel Services – Salaries				
100 Personnel Services – Salaries				513,099.95
Total Personnel Services – Salaries				\$513,099.95
200 Personnel Services – Employee Benefits				
210 Group Insurance – Contracted Provider				126,037.20
220 Social Security Contributions				37,828.29
230 PSERS Retirement Contributions				163,957.53
260 Workers' Compensation				4,573.74
Total Personnel Services – Employee Benefits				\$332,396.76
300 Purchased Professional and Technical Services				
330 Other Professional Services				64,165.21
Total Purchased Professional and Technical Services				\$64,165.21
400 Purchased Property Services				
410 Cleaning Services				78,726.00
420 Utility Services				22,730.82
430 Repairs and Maintenance Services				131,675.39
440 Rentals				700.00
460 Extermination Services				1,270.00
Total Purchased Property Services				\$235,102.21
500 Other Purchased Services				
523 General Property and Liability Insurance				63,612.00
530 Communications				32,427.33
580 Travel				2,439.37
Total Other Purchased Services				\$98,478.70
600 Supplies				
610 General Supplies	37,225.79	27,442.26		64,668.05
620 Energy				296,906.90
Total Supplies	\$37,225.79	\$27,442.26		\$361,574.95
700 Property				
752 Capital Equipment – Original and Additional				18,415.28
Total Property				\$18,415.28
Total 2611 Supervision of Operation and Maintenance of Plant Services – Head of Component	\$37,225.79	\$27,442.26		\$1,623,233.06

General Fund (10)

2660 Safety and Security Services

Elementary

Secondary

Federal

Total

300 Purchased Professional and Technical Services

330 Other Professional Services

1,434.33

Total Purchased Professional and Technical Services

\$1,434.33

600 Supplies

610 General Supplies

740.35

740.35

Total Supplies

\$740.35

\$740.35

700 Property

756 Capitalized Technology Hardware and Equipment – Original

25,961.00

Total Property

\$25,961.00

Total 2660 Safety and Security Services

\$740.35

\$28,135.68

General Fund (10)

	<u>Elementary</u>	<u>Secondary</u>	<u>Federal</u>	<u>Total</u>
2700 Student Transportation Services				
100 Personnel Services – Salaries				
100 Personnel Services – Salaries				897.64
Total Personnel Services – Salaries				\$897.64
200 Personnel Services – Employee Benefits				
220 Social Security Contributions				68.68
230 PSERS Retirement Contributions				7.00
Total Personnel Services – Employee Benefits				\$75.68
500 Other Purchased Services				
513 Contracted Carriers				994,848.92
516 Student Transportation Services From the IU				3,452.17
Total Other Purchased Services				\$998,301.09
Total 2700 Student Transportation Services				\$999,274.41

General Fund (10)

	<u>Elementary</u>	<u>Secondary</u>	<u>Federal</u>	<u>Total</u>
2710 Supervision of Student Transportation Services				
100 Personnel Services – Salaries				
100 Personnel Services – Salaries				897.64
Total Personnel Services – Salaries				\$897.64
200 Personnel Services – Employee Benefits				
220 Social Security Contributions				68.68
230 PSERS Retirement Contributions				7.00
Total Personnel Services – Employee Benefits				\$75.68
500 Other Purchased Services				
516 Student Transportation Services From the IU				3,452.17
Total Other Purchased Services				\$3,452.17
Total 2710 Supervision of Student Transportation Services				\$4,425.49

General Fund (10)

2711 Supervision of Student Transportation Services – Head of Component

Elementary

Secondary

Federal

Total

100 Personnel Services – Salaries

100 Personnel Services – Salaries

897.64

Total Personnel Services – Salaries

\$897.64

200 Personnel Services – Employee Benefits

220 Social Security Contributions

68.68

230 PSERS Retirement Contributions

7.00

Total Personnel Services – Employee Benefits

\$75.68

500 Other Purchased Services

516 Student Transportation Services From the IU

3,452.17

Total Other Purchased Services

\$3,452.17

Total 2711 Supervision of Student Transportation Services – Head of Component

\$4,425.49

LEA : 103028203 Riverview SD

Printed 12/14/2018 9:18:12 AM

General Fund (10)

2730 Monitoring Services

Elementary

Secondary

Federal

Total

500 Other Purchased Services

513 Contracted Carriers

91,725.58

Total Other Purchased Services

\$91,725.58

Total 2730 Monitoring Services

\$91,725.58

LEA : 103028203 Riverview SD

Printed 12/14/2018 9:18:12 AM

General Fund (10)

	<u>Elementary</u>	<u>Secondary</u>	<u>Federal</u>	<u>Total</u>
2750 Nonpublic Transportation				
500 <u>Other Purchased Services</u>				
513 Contracted Carriers				903,123.34
Total Other Purchased Services				\$903,123.34
Total 2750 Nonpublic Transportation				\$903,123.34

LEA : 103028203 Riverview SD

Printed 12/14/2018 9:18:12 AM

General Fund (10)

2900 Other Support Services

Elementary

Secondary

Federal

Total

500 Other Purchased Services

595 IU Payments By Withholding

18,823.93

Total Other Purchased Services

\$18,823.93

Total 2900 Other Support Services

\$18,823.93

General Fund (10)

2910 Support Services Not Listed Elsewhere In the 2000 Series

Elementary

Secondary

Federal

Total

500 Other Purchased Services

595 IU Payments By Withholding

18,823.93

Total Other Purchased Services

\$18,823.93

Total 2910 Support Services Not Listed Elsewhere In the 2000 Series

\$18,823.93

General Fund (10)

3000 Operation of Non-Instructional Services

Total

100 Personnel Services – Salaries

100 Personnel Services – Salaries 311,070.51

Total Personnel Services – Salaries \$311,070.51

200 Personnel Services – Employee Benefits

220 Social Security Contributions 23,682.33

230 PSERS Retirement Contributions 43,680.01

250 Unemployment Compensation 755.74

260 Workers' Compensation 3,377.57

Total Personnel Services – Employee Benefits \$71,495.65

300 Purchased Professional and Technical Services

330 Other Professional Services 27,160.00

350 Security / Safety Services 28,999.63

Total Purchased Professional and Technical Services \$56,159.63

400 Purchased Property Services

410 Cleaning Services 93,563.62

430 Repairs and Maintenance Services 4,308.43

440 Rentals 6,146.79

Total Purchased Property Services \$104,018.84

500 Other Purchased Services

510 Student Transportation Services 59,778.45

580 Travel 2,742.64

Total Other Purchased Services \$62,521.09

600 Supplies

610 General Supplies 16,585.99

Total Supplies \$16,585.99

700 Property

762 Capitalized Equipment - Replacement 19,194.69

790 Other Property 19,591.01

Total Property \$38,785.70

800 Other Objects

810 Dues and Fees 12,373.76

860 Grants To Municipal and Community Service Organizations 10,250.00

890 Miscellaneous Expenditures 23,000.00

Total Other Objects \$45,623.76

Total 3000 Operation of Non-Instructional Services \$706,261.17

General Fund (10)

3200 Student Activities

Elementary Secondary Federal Total

100	<u>Personnel Services – Salaries</u>				
	100 Personnel Services – Salaries				305,095.49
Total Personnel Services – Salaries					\$305,095.49
200	<u>Personnel Services – Employee Benefits</u>				
	220 Social Security Contributions				23,225.24
	230 PSERS Retirement Contributions				41,733.95
	250 Unemployment Compensation				755.74
	260 Workers' Compensation				3,377.57
Total Personnel Services – Employee Benefits					\$69,092.50
300	<u>Purchased Professional and Technical Services</u>				
	330 Other Professional Services				27,160.00
	350 Security / Safety Services				4,231.82
Total Purchased Professional and Technical Services					\$31,391.82
400	<u>Purchased Property Services</u>				
	410 Cleaning Services				93,563.62
	430 Repairs and Maintenance Services				4,308.43
	440 Rentals				6,146.79
Total Purchased Property Services					\$104,018.84
500	<u>Other Purchased Services</u>				
	510 Student Transportation Services				59,778.45
	580 Travel				2,742.64
Total Other Purchased Services					\$62,521.09
600	<u>Supplies</u>				
	610 General Supplies				16,585.99
Total Supplies					\$16,585.99
700	<u>Property</u>				
	762 Capitalized Equipment - Replacement				19,194.69
	790 Other Property				19,591.01
Total Property					\$38,785.70
800	<u>Other Objects</u>				
	810 Dues and Fees				12,373.76
	890 Miscellaneous Expenditures				23,000.00
Total Other Objects					\$35,373.76
Total 3200 Student Activities					\$662,865.19

General Fund (10)

3300 Community Services

Elementary

Secondary

Federal

Total

100 Personnel Services – Salaries

100 Personnel Services – Salaries

5,975.02

Total Personnel Services – Salaries

\$5,975.02

200 Personnel Services – Employee Benefits

220 Social Security Contributions

457.09

230 PSERS Retirement Contributions

1,946.06

Total Personnel Services – Employee Benefits

\$2,403.15

300 Purchased Professional and Technical Services

350 Security / Safety Services

24,767.81

Total Purchased Professional and Technical Services

\$24,767.81

800 Other Objects

860 Grants To Municipal and Community Service Organizations

10,250.00

Total Other Objects

\$10,250.00

Total 3300 Community Services

\$43,395.98

General Fund (10)

4000 Facilities Acquisition, Construction and Improvement Services

Total

300 Purchased Professional and Technical Services

330 Other Professional Services

54.82

Total Purchased Professional and Technical Services

\$54.82

700 Property

752 Capital Equipment – Original and Additional

4,334.00

762 Capitalized Equipment - Replacement

12,767.61

Total Property

\$17,101.61

Total 4000 Facilities Acquisition, Construction and Improvement Services

\$17,156.43

General Fund (10)

4200 Existing Site Improvement Services

Elementary

Secondary

Federal

Total

700 Property

752 Capital Equipment – Original and Additional

4,334.00

Total Property

\$4,334.00

Total 4200 Existing Site Improvement Services

\$4,334.00

General Fund (10)

	<u>Elementary</u>	<u>Secondary</u>	<u>Federal</u>	<u>Total</u>
4600 Existing Building Improvement Services				
300 <u>Purchased Professional and Technical Services</u>				
330 Other Professional Services				54.82
Total Purchased Professional and Technical Services				\$54.82
700 <u>Property</u>				
762 Capitalized Equipment - Replacement				12,767.61
Total Property				\$12,767.61
Total 4600 Existing Building Improvement Services				\$12,822.43

General Fund (10)

5000 Other Expenditures and Financing Uses

Total

800 Other Objects

830 Interest	325,303.77
880 Refunds of Prior Years' Receipts	60,958.37

Total Other Objects	\$386,262.14
----------------------------	---------------------

900 Other Uses of Funds

910 Redemption of Principal	915,333.40
930 Fund Transfers	64,449.35
932 Capital Reserve Fund Transfers Applicable To Fund 32	874,662.00

Total Other Uses of Funds	\$1,854,444.75
----------------------------------	-----------------------

Total 5000 Other Expenditures and Financing Uses	\$2,240,706.89
---	-----------------------

General Fund (10)

5100 Debt Service / Other Expenditures and Financing Uses

Elementary

Secondary

Federal

Total

800 Other Objects

830 Interest

325,303.77

880 Refunds of Prior Years' Receipts

60,958.37

Total Other Objects

\$386,262.14

900 Other Uses of Funds

910 Redemption of Principal

915,333.40

Total Other Uses of Funds

\$915,333.40

Total 5100 Debt Service / Other Expenditures and Financing Uses

\$1,301,595.54

General Fund (10)

	<u>Elementary</u>	<u>Secondary</u>	<u>Federal</u>	<u>Total</u>
5110 Debt Service				
800 Other Objects				
830 Interest				325,303.77
Total Other Objects				\$325,303.77
900 Other Uses of Funds				
910 Redemption of Principal				915,333.40
Total Other Uses of Funds				\$915,333.40
Total 5110 Debt Service				\$1,240,637.17

General Fund (10)

5130 Refund of Prior Year Revenues / Receipts

Elementary

Secondary

Federal

Total

800 Other Objects

880 Refunds of Prior Years' Receipts

60,958.37

Total Other Objects

\$60,958.37

Total 5130 Refund of Prior Year Revenues / Receipts

\$60,958.37

LEA : 103028203 Riverview SD

Printed 12/14/2018 9:18:21 AM

General Fund (10)

5200 Interfund Transfers – Out

Elementary

Secondary

Federal

Total

900 Other Uses of Funds

930 Fund Transfers

64,449.35

932 Capital Reserve Fund Transfers Applicable To Fund 32

874,662.00

Total Other Uses of Funds

\$939,111.35

Total 5200 Interfund Transfers – Out

\$939,111.35

General Fund (10)

5230 Capital Projects Fund Transfers

Elementary

Secondary

Federal

Total

900 Other Uses of Funds

932 Capital Reserve Fund Transfers Applicable To Fund 32

874,662.00

Total Other Uses of Funds

\$874,662.00

Total 5230 Capital Projects Fund Transfers

\$874,662.00

LEA : 103028203 Riverview SD

Printed 12/14/2018 9:18:21 AM

General Fund (10)

5250 Enterprise Fund Transfers

Elementary

Secondary

Federal

Total

900 Other Uses of Funds

930 Fund Transfers

60,000.00

Total Other Uses of Funds

\$60,000.00

Total 5250 Enterprise Fund Transfers

\$60,000.00

LEA : 103028203 Riverview SD

Printed 12/14/2018 9:18:21 AM

General Fund (10)

	<u>Elementary</u>	<u>Secondary</u>	<u>Federal</u>	<u>Total</u>
5280 Activity Fund Transfers				
900 <u>Other Uses of Funds</u>				
930 Fund Transfers				4,449.35
Total Other Uses of Funds				\$4,449.35
Total 5280 Activity Fund Transfers				\$4,449.35

LEA : 103028203 Riverview SD

Printed 12/14/2018 9:18:14 AM

Capital Reserve Fund - § 1431 (32)

2000 Support Services

800 Other Objects

810 Dues and Fees

Total

153.28

Total Other Objects

\$153.28

Total 2000 Support Services

\$153.28

LEA : 103028203 Riverview SD

Printed 12/14/2018 9:18:14 AM

Capital Reserve Fund - § 1431 (32)

2500 Support Services – Business

Elementary

Secondary

Federal

Total

800 Other Objects

810 Dues and Fees

153.28

Total Other Objects

\$153.28

Total 2500 Support Services – Business

\$153.28

LEA : 103028203 Riverview SD

Printed 12/14/2018 9:18:14 AM

Capital Reserve Fund - § 1431 (32)

2510 Fiscal Services

Elementary

Secondary

Federal

Total

800 Other Objects

810 Dues and Fees

153.28

Total Other Objects

\$153.28

Total 2510 Fiscal Services

\$153.28

LEA : 103028203 Riverview SD

Printed 12/14/2018 9:18:14 AM

Capital Reserve Fund - § 1431 (32)

2511 Supervision of Fiscal Services - Head of Component

Elementary

Secondary

Federal

Total

800 Other Objects

810 Dues and Fees

153.28

Total Other Objects

\$153.28

Total 2511 Supervision of Fiscal Services - Head of Component

\$153.28

Capital Reserve Fund - § 1431 (32)

4000 Facilities Acquisition, Construction and Improvement Services

Total

300 Purchased Professional and Technical Services

330 Other Professional Services

891,733.00

Total Purchased Professional and Technical Services

\$891,733.00

Total 4000 Facilities Acquisition, Construction and Improvement Services

\$891,733.00

LEA : 103028203 Riverview SD

Printed 12/14/2018 9:18:19 AM

Capital Reserve Fund - § 1431 (32)

4600 Existing Building Improvement Services

Elementary

Secondary

Federal

Total

300 Purchased Professional and Technical Services

330 Other Professional Services

891,733.00

Total Purchased Professional and Technical Services

\$891,733.00

Total 4600 Existing Building Improvement Services

\$891,733.00

Other Capital Projects Fund (39)

2000 Support Services

800 Other Objects

810 Dues and Fees

125,413.34

Total Other Objects

\$125,413.34

Total 2000 Support Services

\$125,413.34

LEA : 103028203 Riverview SD

Printed 12/14/2018 9:18:15 AM

Other Capital Projects Fund (39)

2300 Support Services – Administration

Elementary

Secondary

Federal

Total

800 Other Objects

810 Dues and Fees

125,413.34

Total Other Objects

\$125,413.34

Total 2300 Support Services – Administration

\$125,413.34

LEA : 103028203 Riverview SD

Printed 12/14/2018 9:18:15 AM

Other Capital Projects Fund (39)

2390 Other Administration Services

Elementary

Secondary

Federal

Total

800 Other Objects

810 Dues and Fees

125,413.34

Total Other Objects

\$125,413.34

Total 2390 Other Administration Services

\$125,413.34

Other Capital Projects Fund (39)

4000 Facilities Acquisition, Construction and Improvement Services

Total

300 Purchased Professional and Technical Services

330 Other Professional Services

345,941.20

Total Purchased Professional and Technical Services

\$345,941.20

Total 4000 Facilities Acquisition, Construction and Improvement Services

\$345,941.20

LEA : 103028203 Riverview SD

Printed 12/14/2018 9:18:20 AM

Other Capital Projects Fund (39)

4600 Existing Building Improvement Services

Elementary

Secondary

Federal

Total

300 Purchased Professional and Technical Services

330 Other Professional Services

345,941.20

Total Purchased Professional and Technical Services

\$345,941.20

Total 4600 Existing Building Improvement Services

\$345,941.20

Other Capital Projects Fund (39)

5000 Other Expenditures and Financing Uses

Total

900 Other Uses of Funds

990 Miscellaneous Other Uses of Funds

69,402.50

Total Other Uses of Funds

\$69,402.50

Total 5000 Other Expenditures and Financing Uses

\$69,402.50

Other Capital Projects Fund (39)

5100 Debt Service / Other Expenditures and Financing Uses

Elementary

Secondary

Federal

Total

900 Other Uses of Funds

990 Miscellaneous Other Uses of Funds

69,402.50

Total Other Uses of Funds

\$69,402.50

Total 5100 Debt Service / Other Expenditures and Financing Uses

\$69,402.50

LEA : 103028203 Riverview SD

Printed 12/14/2018 9:18:22 AM

Other Capital Projects Fund (39)

5150 Bond Discounts

Elementary

Secondary

Federal

Total

900 Other Uses of Funds

990 Miscellaneous Other Uses of Funds

69,402.50

Total Other Uses of Funds

\$69,402.50

Total 5150 Bond Discounts

\$69,402.50

	<u>General Fund(10)</u>	<u>Public Purpose Trust(27)</u>	<u>Other Compt Approved (28)</u>	<u>Athletic / Activity(29)</u>	<u>Capital Reserve (690. 1850)(31)</u>
1000 Instruction					
1100 Regular Programs - Elementary / Secondary	9,283,226.12				
1200 Special Programs - Elementary / Secondary	2,338,412.75				
1300 Vocational Education	490,234.29				
1400 Other Instructional Programs - Elementary / Secondary	101,301.71				
Total Instruction	\$12,213,174.87				
2000 Support Services					
2100 Support Services - Students	608,559.61				
2200 Support Services - Instructional Staff	1,864,446.36				
2300 Support Services - Administration	1,835,464.96				
2400 Support Services - Pupil Health	271,328.12				
2500 Support Services - Business	407,391.00				
2600 Operation and Maintenance of Plant Services	1,651,368.74				
2700 Student Transportation Services	999,274.41				
2900 Other Support Services	18,823.93				
Total Support Services	\$7,656,657.13				
3000 Operation of Non-Instructional Services					
3200 Student Activities	662,865.19				
3300 Community Services	43,395.98				
Total Operation of Non-Instructional Services	\$706,261.17				
4000 Facilities Acquisition, Construction and Improvement Services					
4200 Existing Site Improvement Services	4,334.00				
4600 Existing Building Improvement Services	12,822.43				
Total Facilities Acquisition, Construction and Improvement	\$17,156.43				
5000 Other Expenditures and Financing Uses					
5100 Debt Service / Other Expenditures and Financing Uses	1,301,595.54				
5200 Interfund Transfers - Out	939,111.35				
Total Other Expenditures and Financing Uses	\$2,240,706.89				
TOTAL ACTUAL EXPENDITURES & OTHER FINANCING USES	\$22,833,956.49				

	<u>Capital Reserve (1431)(32)</u>	<u>Other Capital Projects Fund(39)</u>	<u>Debt Service(40)</u>	<u>Permanent(90)</u>	<u>Total</u>
1000 Instruction					
1100 Regular Programs - Elementary / Secondary					9,283,226.12
1200 Special Programs - Elementary / Secondary					2,338,412.75
1300 Vocational Education					490,234.29
1400 Other Instructional Programs - Elementary / Secondary					101,301.71
Total Instruction					\$12,213,174.87
2000 Support Services					
2100 Support Services - Students					608,559.61
2200 Support Services - Instructional Staff					1,864,446.36
2300 Support Services - Administration		125,413.34			1,960,878.30
2400 Support Services - Pupil Health					271,328.12
2500 Support Services - Business	153.28				407,544.28
2600 Operation and Maintenance of Plant Services					1,651,368.74
2700 Student Transportation Services					999,274.41
2900 Other Support Services					18,823.93
Total Support Services	\$153.28	\$125,413.34			\$7,782,223.75
3000 Operation of Non-Instructional Services					
3200 Student Activities					662,865.19
3300 Community Services					43,395.98
Total Operation of Non-Instructional Services					\$706,261.17
4000 Facilities Acquisition, Construction and Improvement Services					
4200 Existing Site Improvement Services					4,334.00
4600 Existing Building Improvement Services	891,733.00	345,941.20			1,250,496.63
Total Facilities Acquisition, Construction and Improvement	\$891,733.00	\$345,941.20			\$1,254,830.63
5000 Other Expenditures and Financing Uses					
5100 Debt Service / Other Expenditures and Financing Uses		69,402.50			1,370,998.04
5200 Interfund Transfers - Out					939,111.35
Total Other Expenditures and Financing Uses		\$69,402.50			\$2,310,109.39
TOTAL ACTUAL EXPENDITURES & OTHER FINANCING USES	\$891,886.28	\$540,757.04			\$24,266,599.81

LEA : 103028203 Riverview SD

Printed 12/14/2018 9:18:30 AM

PSERS Salary Data (Salary Data should relate to the General Fund only)

Amount Description	Amount
Total Salary Base for salaries subject to PSERS withholding	9,290,464.57
Total Federally Funded salaries subject to PSERS withholding	534,339.00
	<hr/>

Title I Expenditure Data

Amount Description	Amount
Expenditures Funded with Current Title I Funds	199,451.00
Expenditures Funded with Carry over Title I Funds	
	<hr/>
Total Title I Expenditure Data	\$199,451.00
	<hr/>

Benefits for Staff Relative to Collective Bargaining Agreements

	OBJECT	COVERED	NOT COVERED	TOTAL
10 General Fund	No Self Insurance data to report			
	211 Medical Insurance	1,514,195.98	193,829.52	1,708,025.50
	212 Dental Insurance	98,100.67	12,356.64	110,457.31
	215 Eye Care Insurance	3,730.19	1,716.48	5,446.67
	216 Prescription Insurance			
	271 Self-Insurance Medical Benefits			
	272 Self-Insurance Dental Benefits			
	275 Self-Insurance Eye Care Benefits			
	276 Self-Insurance Prescription Benefits			
	FUND TOTAL	\$1,616,026.84	\$207,902.64	\$1,823,929.48
50 Enterprise Fund	No Self Insurance data to report			
	211 Medical Insurance			
	212 Dental Insurance			
	215 Eye Care Insurance			
	216 Prescription Insurance			
	271 Self-Insurance Medical Benefits			
	272 Self-Insurance Dental Benefits			
	275 Self-Insurance Eye Care Benefits			
	276 Self-Insurance Prescription Benefits			
	FUND TOTAL			
60 Internal Service Fund	No Self Insurance data to report			
	211 Medical Insurance			
	212 Dental Insurance			
	215 Eye Care Insurance			
	216 Prescription Insurance			
	271 Self-Insurance Medical Benefits			
	272 Self-Insurance Dental Benefits			
	275 Self-Insurance Eye Care Benefits			
	276 Self-Insurance Prescription Benefits			
	FUND TOTAL			
Total of All Funds		\$1,616,026.84	\$207,902.64	\$1,823,929.48

LEA : 103028203 Riverview SD

Printed 12/14/2018 9:18:32 AM

Function	Special Education (Prior Year)	Nonspecial Education (Prior Year)	Total (Prior Year)	Special Education (Current Year)	Nonspecial Education (Current Year)	Total (Current Year)
2120 Guidance Services	49,827.57	448,448.16	498,275.73	52,562.07	473,058.62	525,620.69
2140 Psychological Services						
2150 Speech Pathology and Audiology Services						
2160 Social Work Services						
2260 Instruction and Curriculum Development Services	27,252.33	245,270.93	272,523.26	26,736.95	240,632.56	267,369.51
2350 Legal and Accounting Services	13,080.38	117,723.42	130,803.80	16,918.14	95,869.46	112,787.60
2420 Medical Services	1,273.00	11,457.00	12,730.00	1,390.00	12,510.00	13,900.00
2440 Nursing Services	24,190.91	217,718.17	241,909.08	25,742.00	216,112.12	241,854.12
2700 Student Transportation Services	220,307.21	660,921.62	881,228.83	249,818.60	749,455.80	999,274.40
Total	\$335,931.40	\$1,701,539.30	\$2,037,470.70	\$373,167.76	\$1,787,638.56	\$2,160,806.32

LEA : 103028203 Riverview SD

Printed 12/14/2018 9:18:33 AM

(PRINCIPAL AMOUNTS ONLY)

GOVERNMENTAL FUNDS/ ACTIVITIES

	Short-Term Borrowing	General Obligation Bonds/Notes	Authority Building Obligations	Other Long-Term Debt	Other Post-Employment Benefits (OPEB)	Compensated Absences	Net Pension Liability	Total
1. Debt at Beginning of Fiscal Year		12,925,000.00		61,001.00	2,814,235.00	28,102.00	33,649,000.00	49,477,338.00
2. Additional Debt Incurred During Year		7,200,000.00			81,124.00	8,878.00	2,108,000.00	9,398,002.00
3. Retirements and Repayments		895,000.00		20,334.00	4,433.00			919,767.00
4. Debt at End of Fiscal Year		19,230,000.00		40,667.00	2,890,926.00	36,980.00	35,757,000.00	57,955,573.00
5. Accreted Interest at End Of Fiscal Year								
6. Total Debt and Accreted Interest		19,230,000.00		40,667.00	2,890,926.00	36,980.00	35,757,000.00	57,955,573.00
7. Current Portion P&I - Due within 1 year		1,335,950.00		20,333.00				1,356,283.00
8. Interest Paid during current fiscal year		323,054.00						323,054.00

(PRINCIPAL AMOUNTS ONLY)

PROPRIETARY FUNDS

- 1. Debt at Beginning of Fiscal Year
- 2. Additional Debt Incurred During Year
- 3. Retirements and Repayments
- 4. Debt at End of Fiscal Year
- 5. Accreted Interest at End Of Fiscal Year
- 6. Total Debt and Accreted Interest
- 7. Current Portion P&I - Due within 1 year
- 8. Interest Paid during current fiscal year

Total Principal and Interest Payments Made by Your School - All Funds

Function	Fund		Principal (910)	Principal (920)	Interest (830)	Total (Principal +Interest)	Misc Other Uses (990)
5110	10	General Fund	915,333.40		325,303.77	1,240,637.17	
5110	20	Special Revenue Funds					
5110	30	Capital Projects Funds					
5110	40	Debt Service Fund					
5110	90	Permanent Fund					
5120	10	General Fund					
5120	20	Special Revenue Funds					
5120	30	Capital Projects Funds					
5120	40	Debt Service Fund					

Total Debt Payments - Governmental Funds			\$915,333.40		\$325,303.77	\$1,240,637.17	
---	--	--	---------------------	--	---------------------	-----------------------	--

Function	Fund		Principal (910)	Principal (920)	Interest (830)	Total (Principal +Interest)
5110	50	Enterprise Fund				
5110	60	Internal Service Fund				
5120	50	Enterprise Fund				
5120	60	Internal Service Fund				

Total Debt Payments - Proprietary Funds						
--	--	--	--	--	--	--

LEA : 103028203 Riverview SD

Printed 12/14/2018 9:18:33 AM

Debt Details
Governmental Funds/ Activities

Debt Category	Debt Issue Date (MM/YYYY)	Principal Amounts Only			Debt at End of Fiscal Year	Current Portion Due Within One Year (Principal and Interest)	Interest Paid During Fiscal Year
		Debt at Beginning of Fiscal Year	Additions	Reductions / Repayments			
General Obligation Bonds/Notes – CIB	06/2018		7,200,000.00		7,200,000.00	176,754.00	
General Obligation Bonds/Notes – CIB	05/2015	8,695,000.00		325,000.00	8,370,000.00	1,027,831.00	184,632.00
General Obligation Bonds/Notes – CIB	05/2015	3,080,000.00		5,000.00	3,075,000.00	103,075.00	98,182.00
General Obligation Bonds/Notes – CIB	09/2010	495,000.00		495,000.00			14,850.00
General Obligation Bonds/Notes – CIB	09/2010	655,000.00		70,000.00	585,000.00	28,290.00	25,390.00
Other Long Term Debt/Liabilities		61,001.00		20,334.00	40,667.00	20,333.00	
Compensated Absences		28,102.00	8,878.00		36,980.00		
Other Post-Employment Benefits (OPEB)		2,814,235.00	81,124.00	4,433.00	2,890,926.00		
Net Pension Liability		33,649,000.00	2,108,000.00		35,757,000.00		
Totals for Debt Entered:		\$49,477,338.00	\$9,398,002.00	\$919,767.00	\$57,955,573.00	\$1,356,283.00	\$323,054.00

General Fund (10)

Section 1: Tuition/Purchased Services as Reported within Expenditure Detail

	Amount
Tuition Reported in General Fund Expenditures 1000-560	1,242,881.00
Purchased Services in General Fund Expenditures 1000-594 and 1000-597	

Section 1 Total	\$1,242,881.00
------------------------	-----------------------

Section 2: Tuition Paid to Institution Types During Fiscal Year

	Tuition Paid For Nonspecial Education	Tuition Paid For Special Education	Total
1 1306 Institutions			
2 Institutionalized Children's Programs			
3 Juveniles Incarcerated in Adult Facilities			
4 Residential Treatment Facilities		158,499.79	158,499.79
5 Other Local Education Agencies			
6 Brick and Mortar Charter Schools			
7 Cyber Charter Schools	375,794.82		375,794.82
8 Career and Technology Centers	200,556.61		200,556.61
9 Approved Private Schools		501,211.54	501,211.54
10 PA Chartered Schools for the Deaf and Blind			
11 Private Residential Rehabilitative Institutions		6,818.24	6,818.24
12 Juvenile Detention Centers			
13 Special Program Jointures			
14 Other Tuition Not Included Elsewhere In This Section			
Section 2 Total	\$576,351.43	\$666,529.57	\$1,242,881.00

LEA : 103028203 Riverview SD

Printed 12/14/2018 9:18:35 AM

Food Service / Cafeteria Operations Fund (51)

3000 Operation of Non-Instructional Services

Total

500 Other Purchased Services

570 Food Service Management 568,759.00

Total Other Purchased Services \$568,759.00

600 Supplies

630 Food 33,773.00

Total Supplies \$33,773.00

700 Property

740 Depreciation 8,429.00

Total Property \$8,429.00

800 Other Objects

810 Dues and Fees 474.00

830 Interest 2,814.00

Total Other Objects \$3,288.00

Total 3000 Operation of Non-Instructional Services \$614,249.00

Food Service / Cafeteria Operations Fund (51)

	<u>Elementary</u>	<u>Secondary</u>	<u>Federal</u>	<u>Total</u>
3100 Food Services				
500 <u>Other Purchased Services</u>				
570 Food Service Management				568,759.00
Total Other Purchased Services				\$568,759.00
600 <u>Supplies</u>				
630 Food				33,773.00
Total Supplies				\$33,773.00
700 <u>Property</u>				
740 Depreciation				8,429.00
Total Property				\$8,429.00
800 <u>Other Objects</u>				
810 Dues and Fees				474.00
830 Interest				2,814.00
Total Other Objects				\$3,288.00
Total 3100 Food Services				\$614,249.00

Food Service / Cafeteria Operations Fund (51)

5000 Other Expenditures and Financing Uses

Total

900 Other Uses of Funds

939 Other Fund Transfers

(60,000.00)

Total Other Uses of Funds

(\$60,000.00)

Total 5000 Other Expenditures and Financing Uses

(\$60,000.00)

Food Service / Cafeteria Operations Fund (51)

	<u>Elementary</u>	<u>Secondary</u>	<u>Federal</u>	<u>Total</u>
5200 Interfund Transfers – Out				
900 <u>Other Uses of Funds</u>				
939 Other Fund Transfers				(60,000.00)
Total Other Uses of Funds				(\$60,000.00)
Total 5200 Interfund Transfers – Out				(\$60,000.00)

LEA : 103028203 Riverview SD

Printed 12/14/2018 9:18:36 AM

Food Service / Cafeteria Operations Fund (51)

	<u>Elementary</u>	<u>Secondary</u>	<u>Federal</u>	<u>Total</u>
5210 General Fund Transfers				
900 Other Uses of Funds				
939 Other Fund Transfers				(60,000.00)
Total Other Uses of Funds				(\$60,000.00)
Total 5210 General Fund Transfers				(\$60,000.00)

	<u>Food Service(51)</u>	<u>Child Care Operations(52)</u>	<u>Other Enterprise(58)</u>	<u>Internal Service(60)</u>	<u>Total</u>
3000 <u>Operation of Non-Instructional Services</u>					
3100 Food Services	614,249.00				614,249.00
Total Operation of Non-Instructional Services	\$614,249.00				\$614,249.00
5000 <u>Other Expenditures and Financing Uses</u>					
5200 Interfund Transfers - Out	(60,000.00)				(60,000.00)
Total Other Expenditures and Financing Uses	(\$60,000.00)				(\$60,000.00)
TOTAL ACTUAL EXPENDITURES & OTHER FINANCING USES	\$554,249.00				\$554,249.00